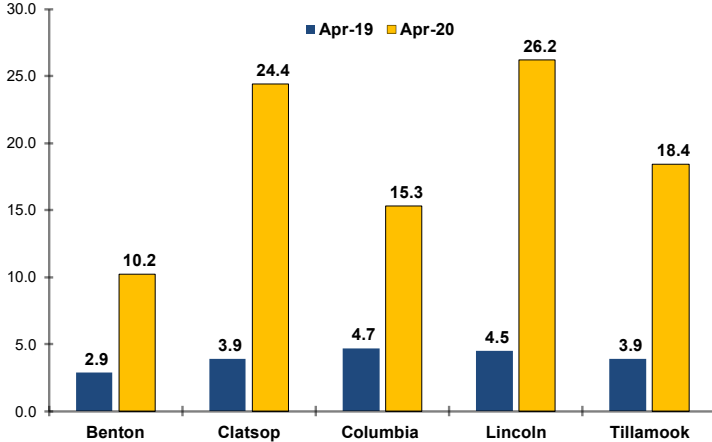
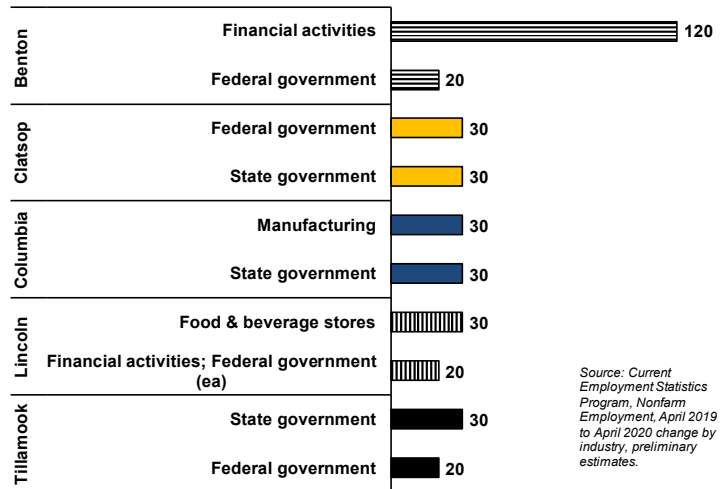


Northwest Oregon Economic Indicators
For Benton, Clatsop, Columbia, Lincoln & Tillamook Counties May 2020

Unemployment Rates Skyrocket in Past Month in NW Oregon Counties Due to COVID-19
(Preliminary Estimates, Not Seasonally Adjusted)

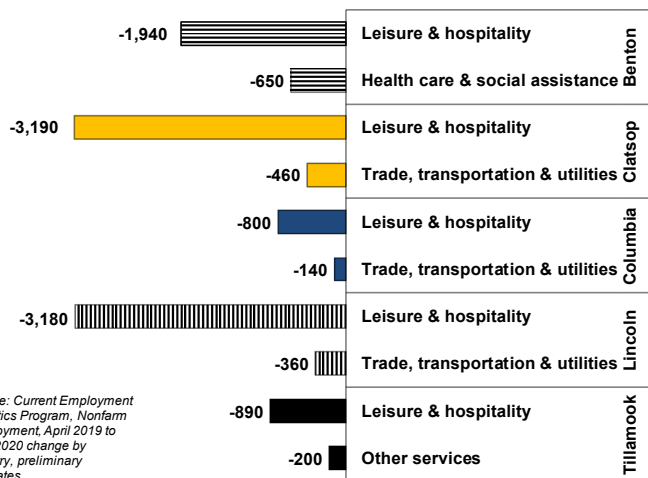


Industries Adding the Most Jobs in Past Year by County



Source: Current Employment Statistics Program, Nonfarm Employment, April 2019 to April 2020 change by industry, preliminary estimates.

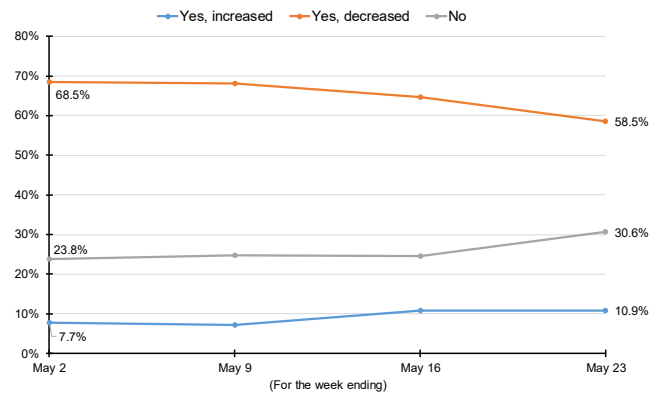
Industries Losing the Most Jobs in Past Year by County



Source: Current Employment Statistics Program, Nonfarm Employment, April 2019 to April 2020 change by industry, preliminary estimates.

Oregon Businesses Report Positive Revenue Changes in Past 4 Weeks

In the last week, did this business experience a change in operating revenues/sales/receipts, not including financial assistance or loans?



Source: U.S. Census Bureau Business Pulse Survey of Oregon businesses, May 2020.

For more economic or labor market data or to be added to this monthly email list, contact:

Shawna Sykes, Workforce Analyst

Cell: 503.396.7355 E-mail: Shawna.L.Sykes@oregon.gov

Erik Knoder, Regional Economist

Desk: 541.574.2306 E-mail: Erik.A.Knoder@oregon.gov

Want to keep up on data related to COVID-19? Visit our web site at www.QualityInfo.org/covid-19