

Coos County: Women in Business



Carlos Diaz
Workforce Analyst/ Economist – Oregon Employment Department

Have you been asked to participate in a Bureau of Labor Statistics (BLS) Survey? *Please do!*

BLS survey information is gathered to create data for businesses, jobseekers, workers and policy-makers about the economy including:

| | | |
|-----------------------------------|----------------------------|--------------------------|
| Employment* | Unemployment* | Occupational Wages* |
| Job vacancies* | Productivity | Occupational Employment* |
| Consumer spending patterns | Workplace injuries | Compensation |
| Long-term employment projections* | Employer-provided benefits | Price movements |

** Collected and produced by Oregon Employment Department*

Your response is vital to ensuring accurate, complete, and unbiased data that is representative of the people and businesses in Oregon and the United States.

Your confidential responses are protected by federal and state law and strict security policies that prohibit us from releasing any information that could reveal the identity of you or your business without your consent.

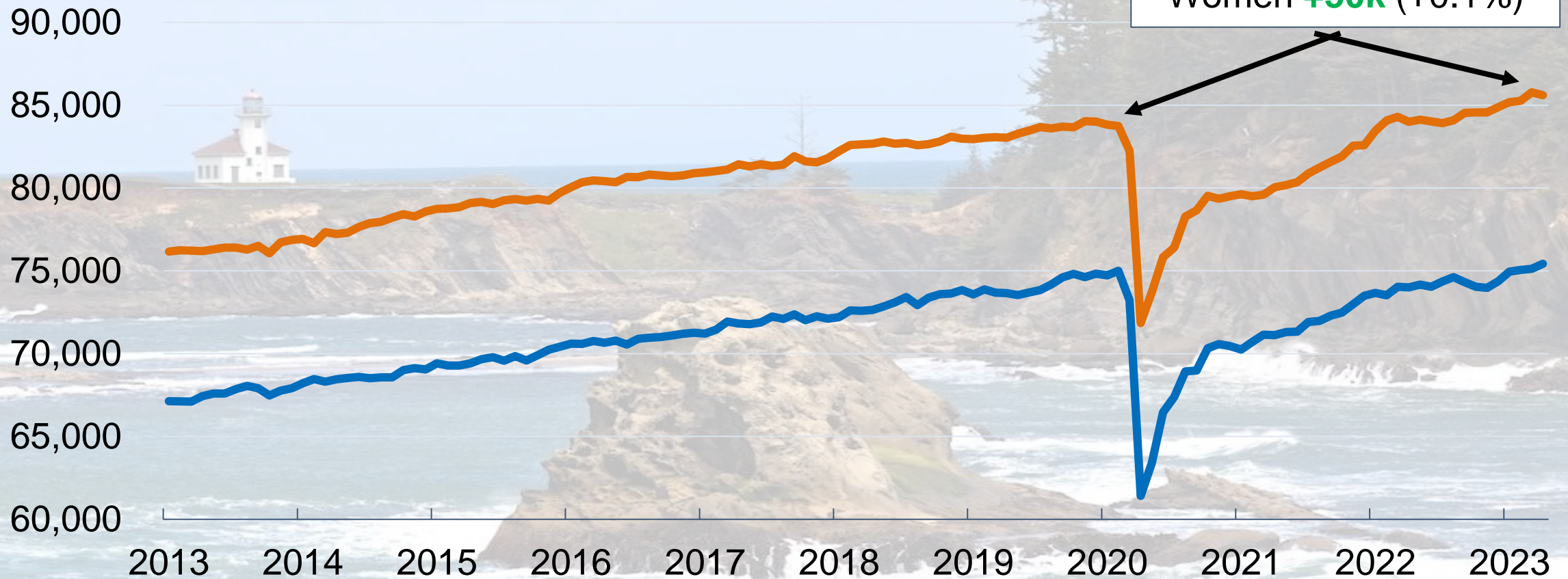
Thank you for helping us track the Oregon economy!

A significant gap in employed women remains from pre-pandemic

Thousands of Employed People by Sex
United States

— Male — Female

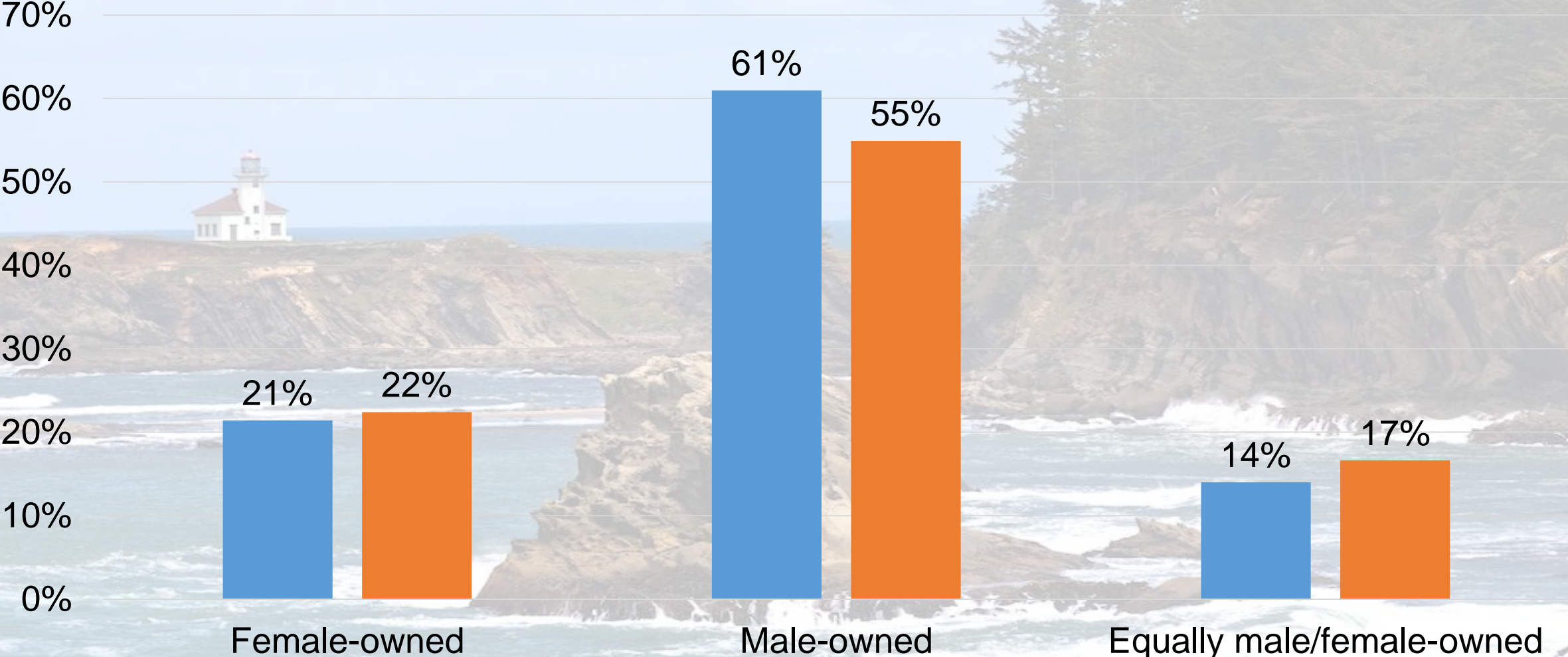
Employment Change
Feb. 2020 to Feb. 2023
Men **+1.516k** (+1.8%)
Women **+50k** (+0.1%)



Women own about 1 in 5 businesses

Percent of employer firms, 2020

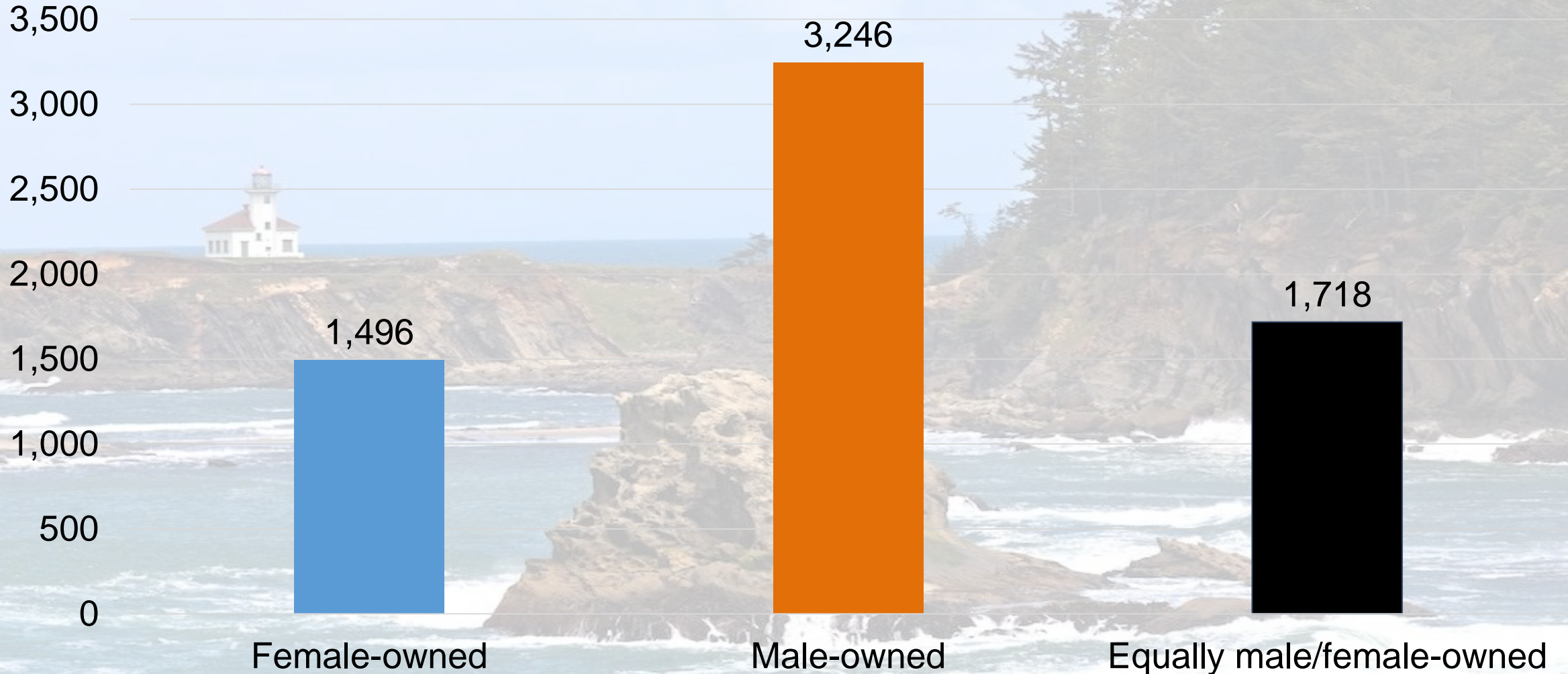
■ United States ■ Oregon



Source: U.S. Census Bureau, 2020 Annual Business Survey

Women owned businesses tend to have lower revenue...

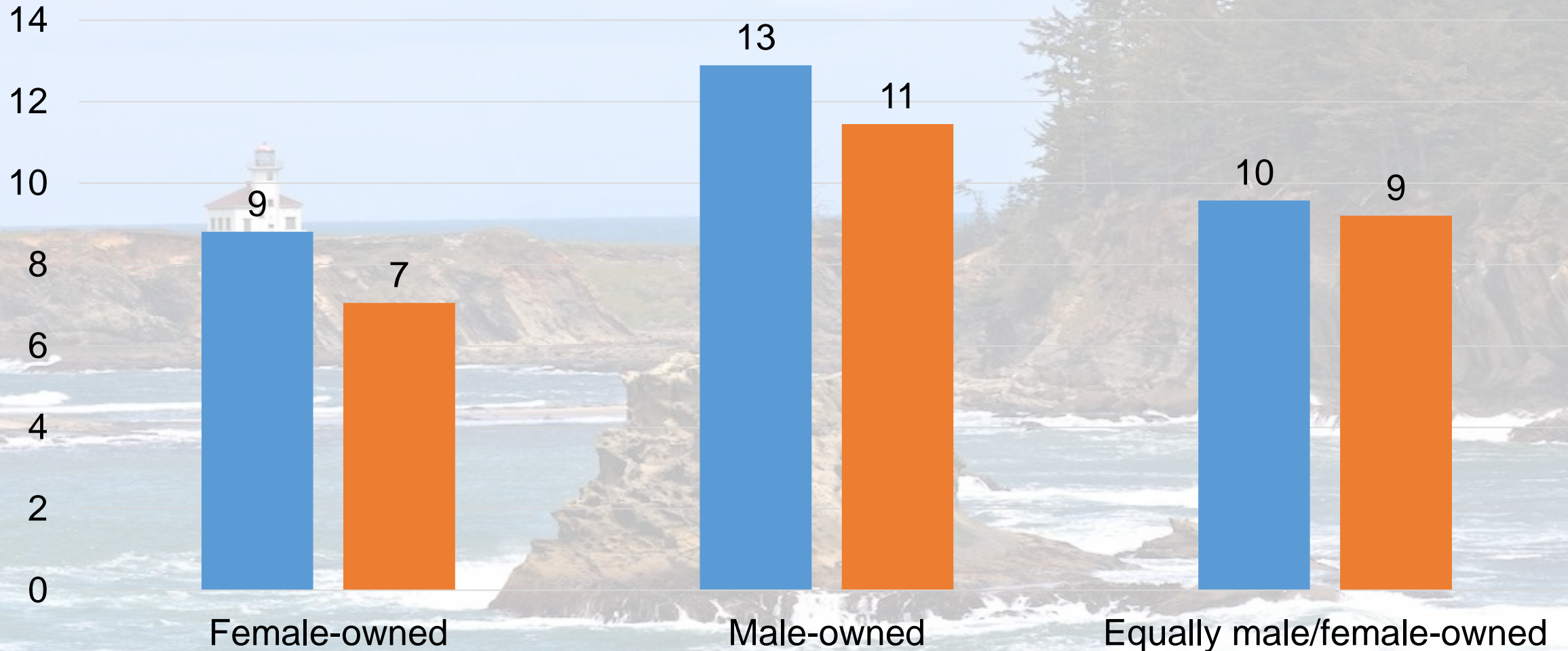
Sales, Value of Shipments, or Revenue per firm (\$1,000)
United States, 2020



And have fewer employees...

Employees per firm, 2020

■ United States ■ Oregon

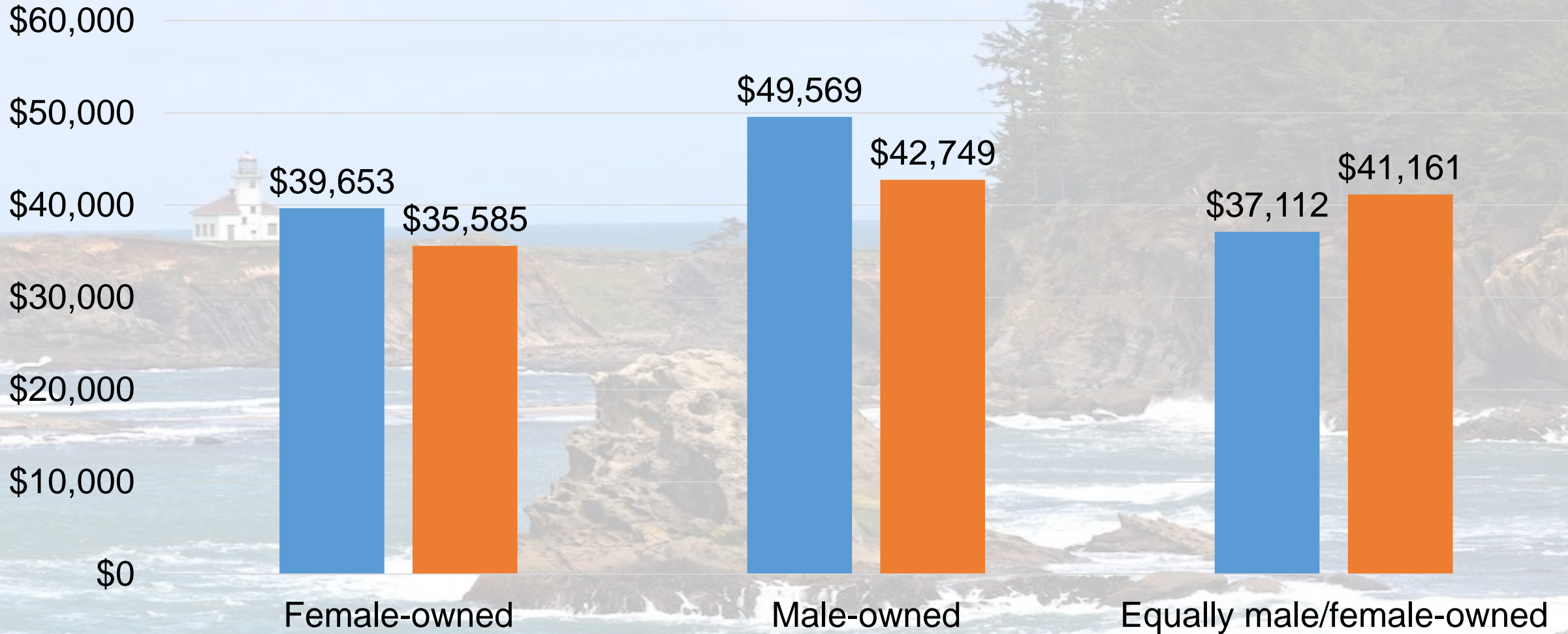


Source: U.S. Census Bureau, 2020 Annual Business Survey

And lower wages...

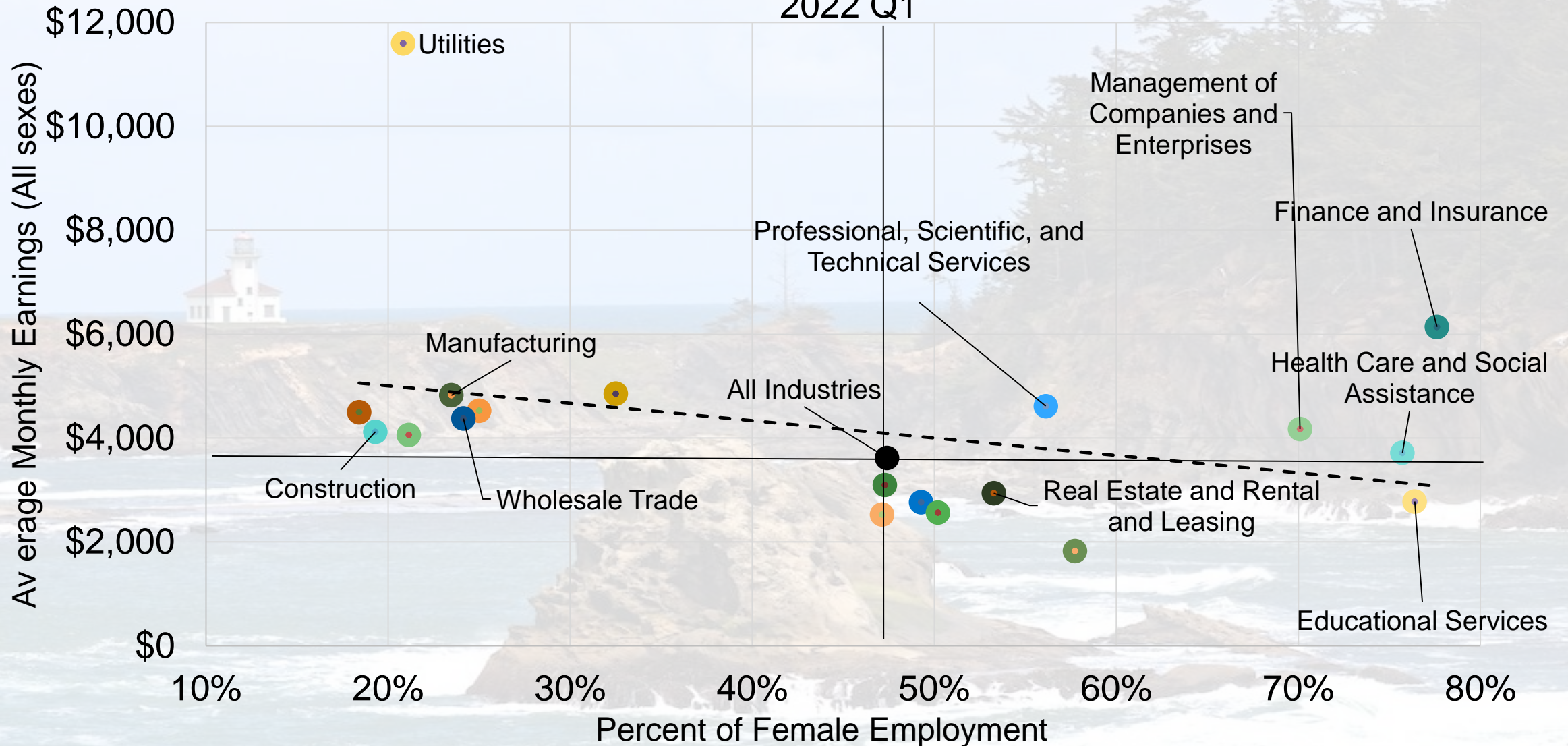
Wages per Employee, 2020

■ United States ■ Oregon



Industries with more women earn lower wages on average

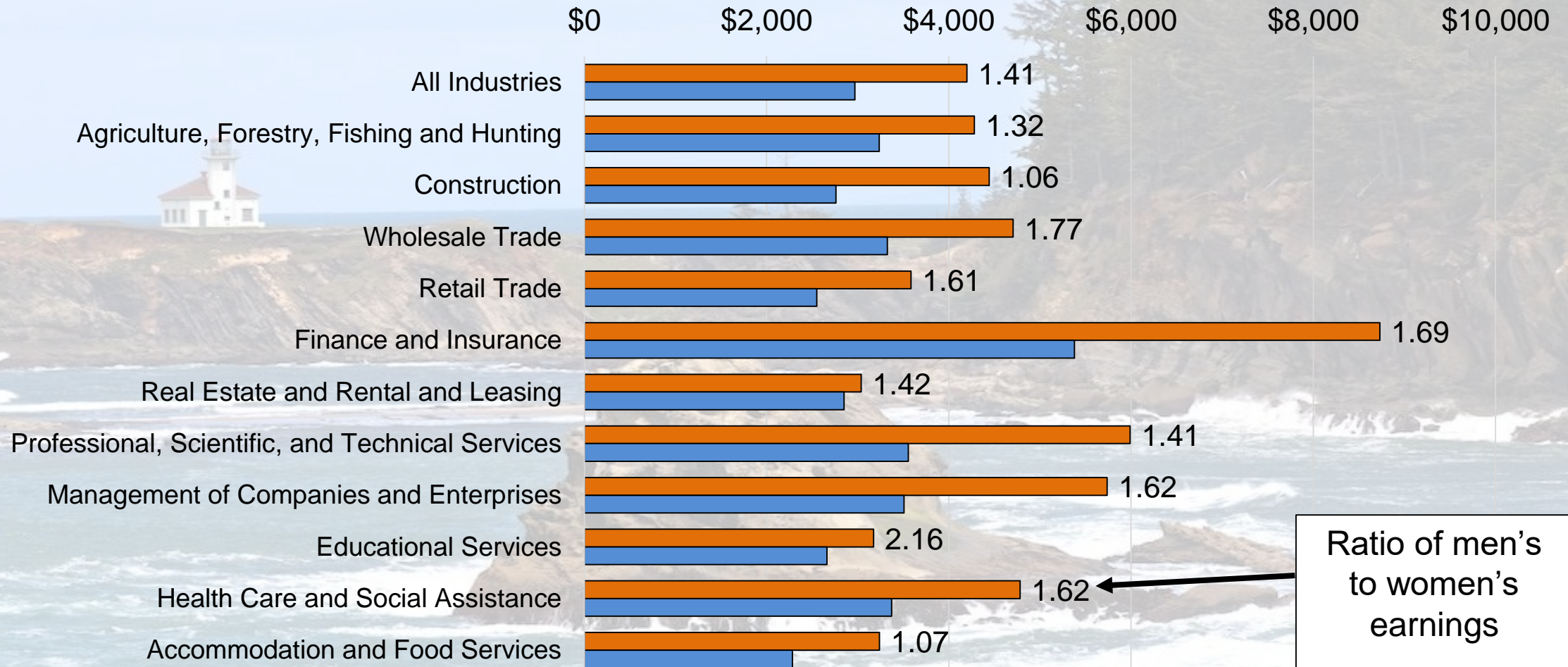
Coos County Employment and Earnings Relationship 2022 Q1



Women earn lower average wages per worker in every industry

Average Monthly Earnings by Industry
Coos County, 2022 Q1

Male Female

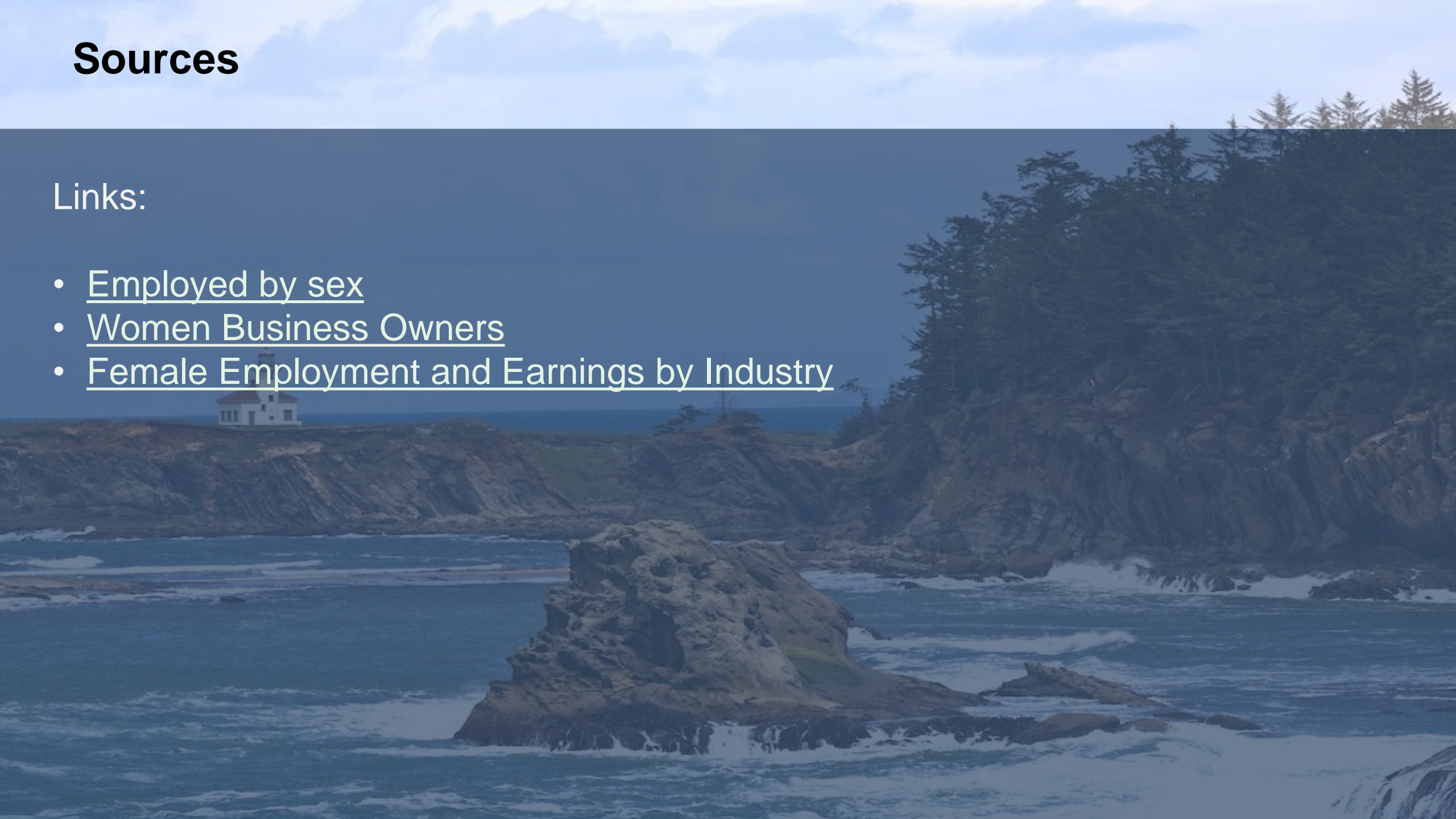


Source: US Census Bureau Quarterly Workforce Indicators

Sources

Links:

- [Employed by sex](#)
- [Women Business Owners](#)
- [Female Employment and Earnings by Industry](#)



Thank You!



Carlos.D.Diaz@employ.oregon.gov