



# Q&A With Representative Mark Owens House District 60

By Chris Rich - Eastern Oregon Regional Economist

July 12, 2022



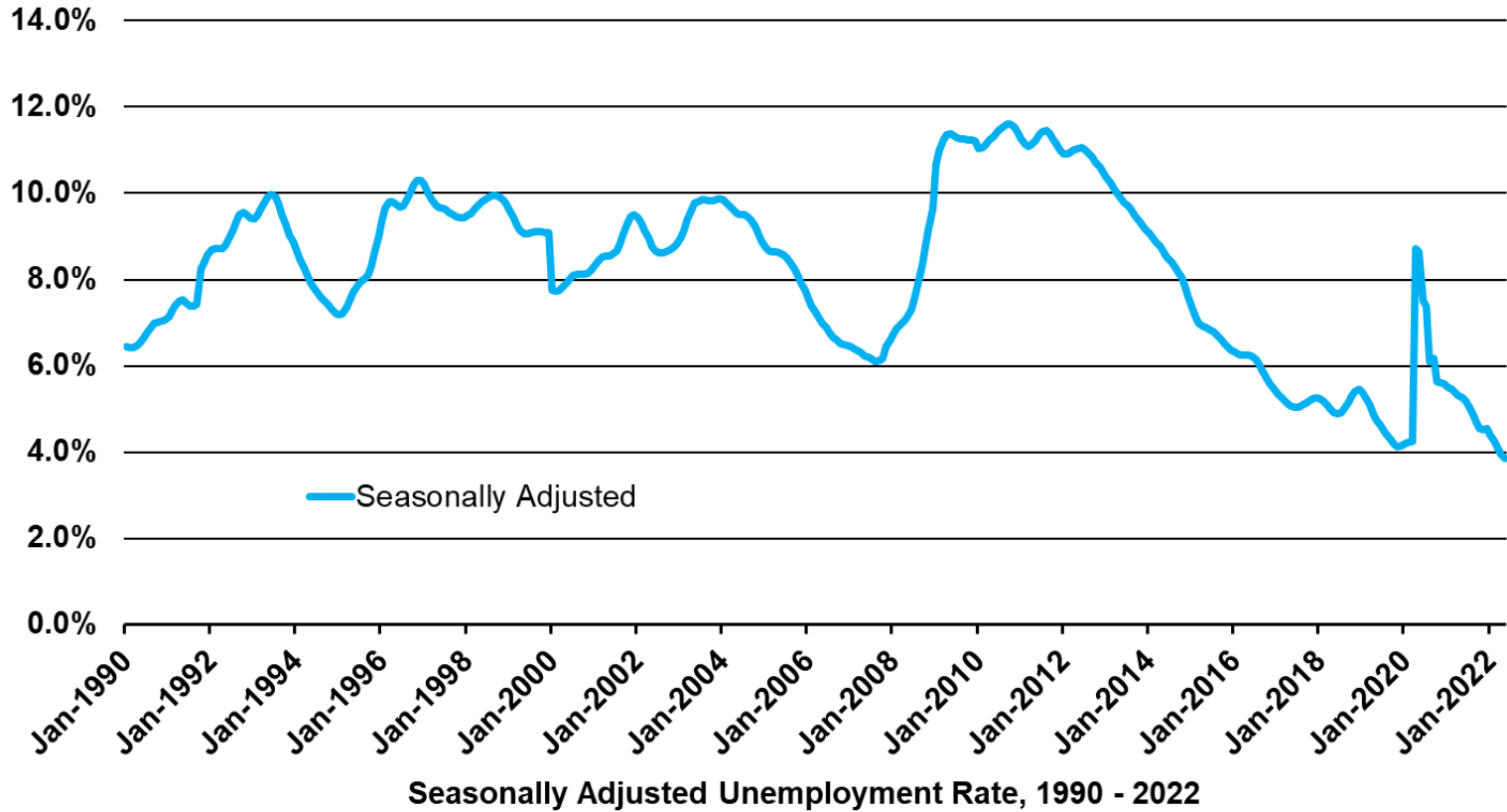
## Population in 2021

	<u>Count</u>	<u>Share</u>
<b>District 60</b>	<b>71,795</b>	<b>100.0%</b>
Baker County	16,860	23.5%
Grant County	7,226	10.1%
Harney County	7,537	10.5%
Lake County	8,177	11.4%
Malheur County	31,995	44.6%

*Source: Oregon Employment Department and Portland State University, Population Research Center*



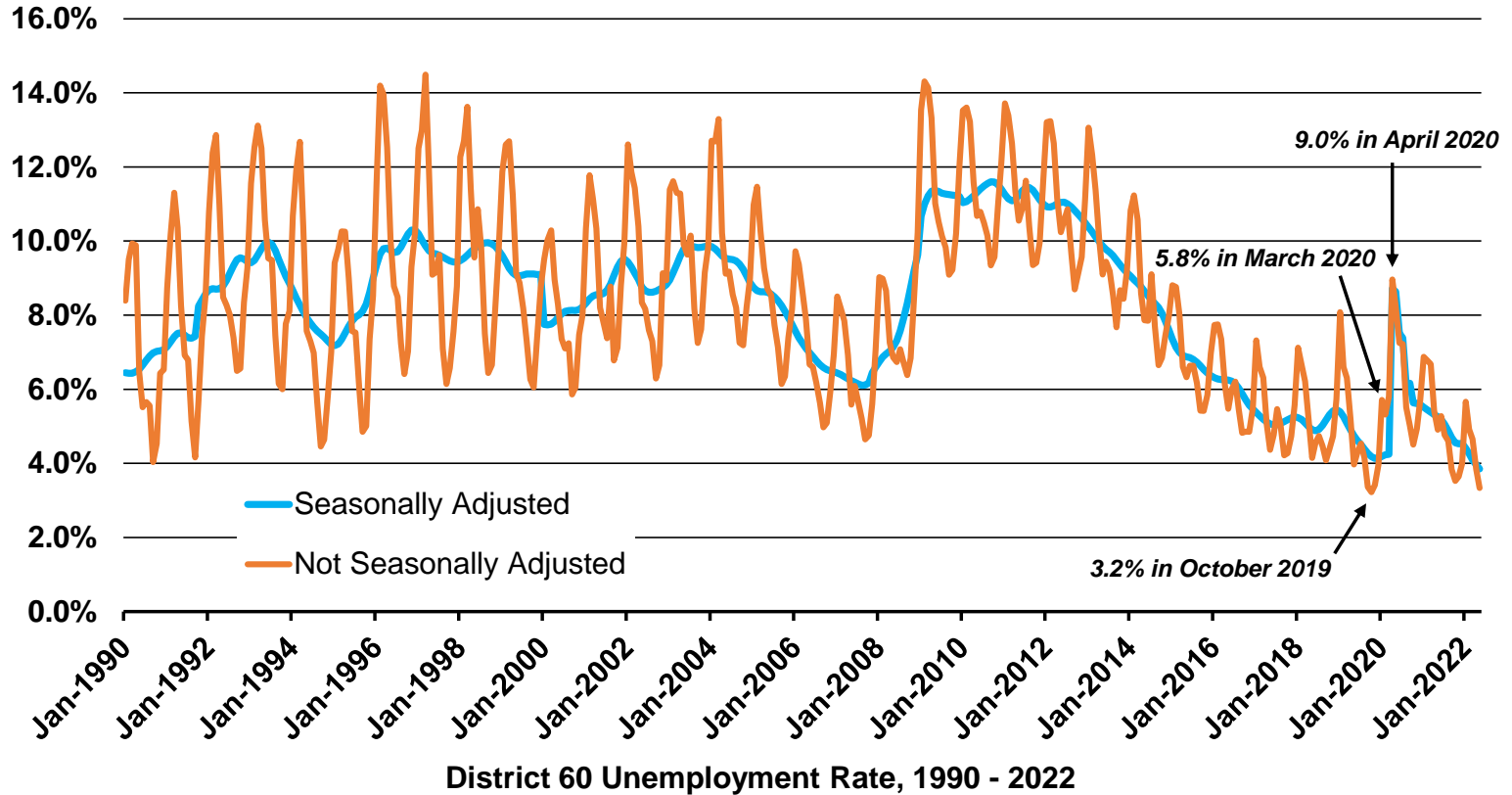
## District 60 Unemployment Rate at Lowest Level on Record



Source: Oregon Employment Department



## Historically the District Has a High Degree of Seasonal Fluctuation



Source: Oregon Employment Department



## Unemployment Rate - Not Seasonally Adjusted

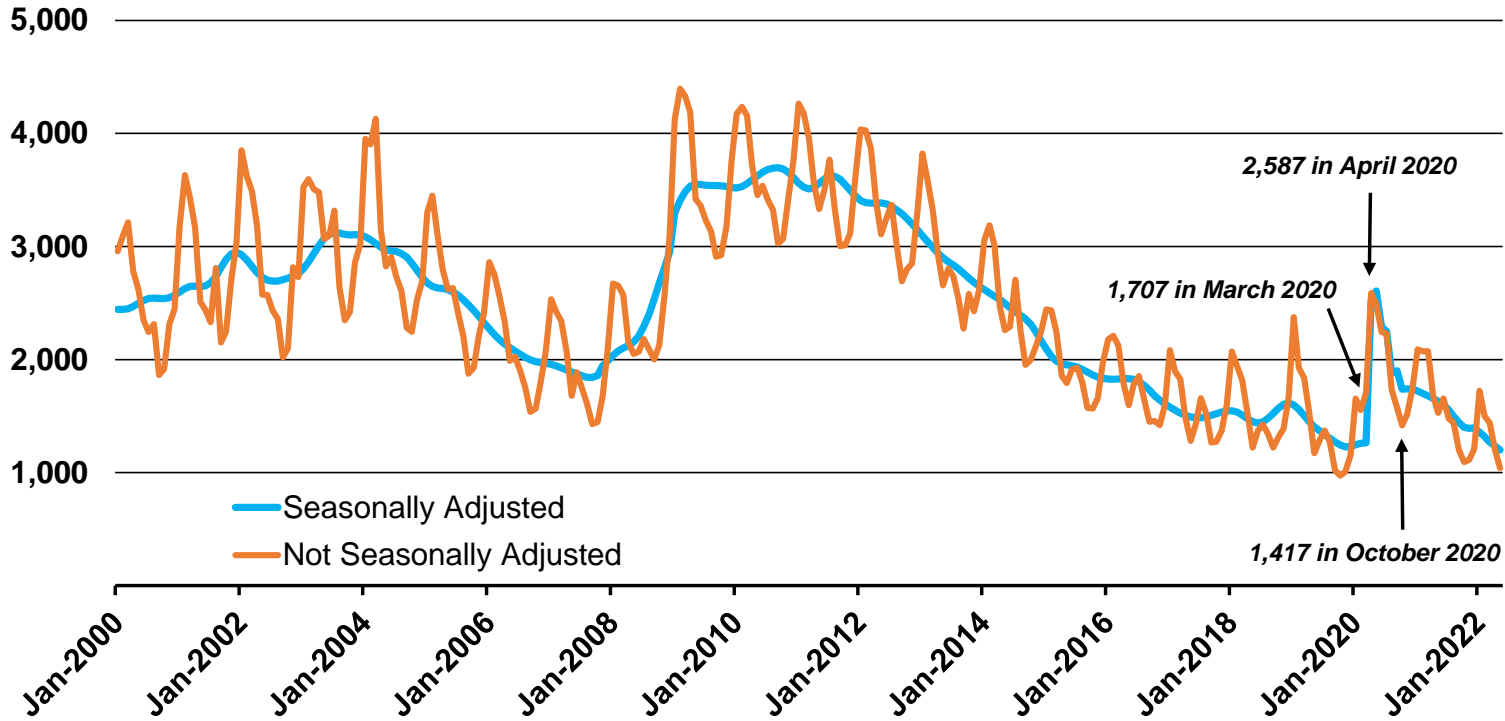
### Historical

	<b>May 2022</b>	<b>Low</b>	<b>High</b>	<b>Median</b>
<b>District 60</b>	<b>3.3</b>	<b>3.2</b>	<b>14.5</b>	<b>8.2</b>
Baker County	3.2	3.2	14.7	7.7
Grant County	4.8	3.7	22.6	9.5
Harney County	3.2	3.2	20.0	8.6
Lake County	3.8	3.4	17.7	8.4
Malheur County	3.0	2.7	13.5	7.3

*Source: Oregon Employment Department*



# Historically Large Available Labor Pool Diminishing Over Time

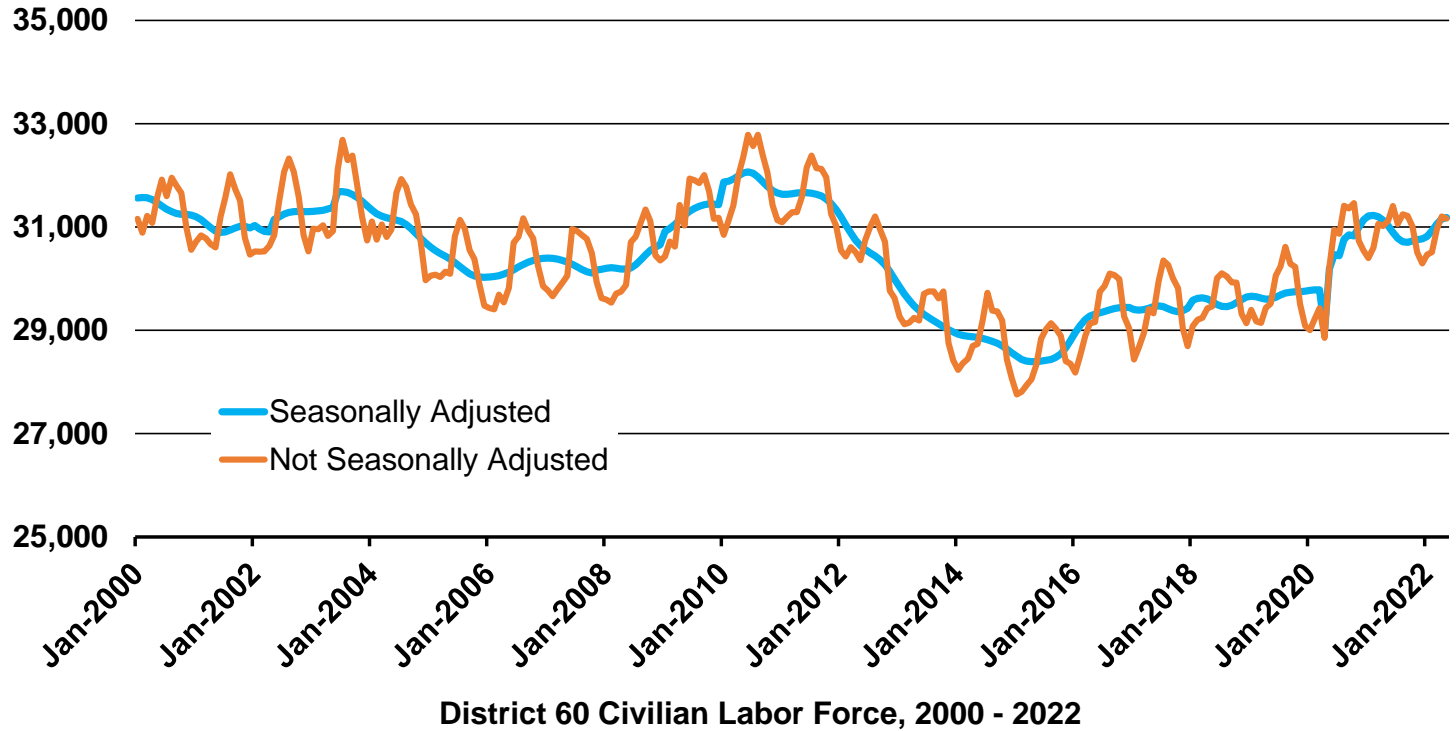


District 60 Total Number of Unemployed, 2000 - 2022

Source: Oregon Employment Department



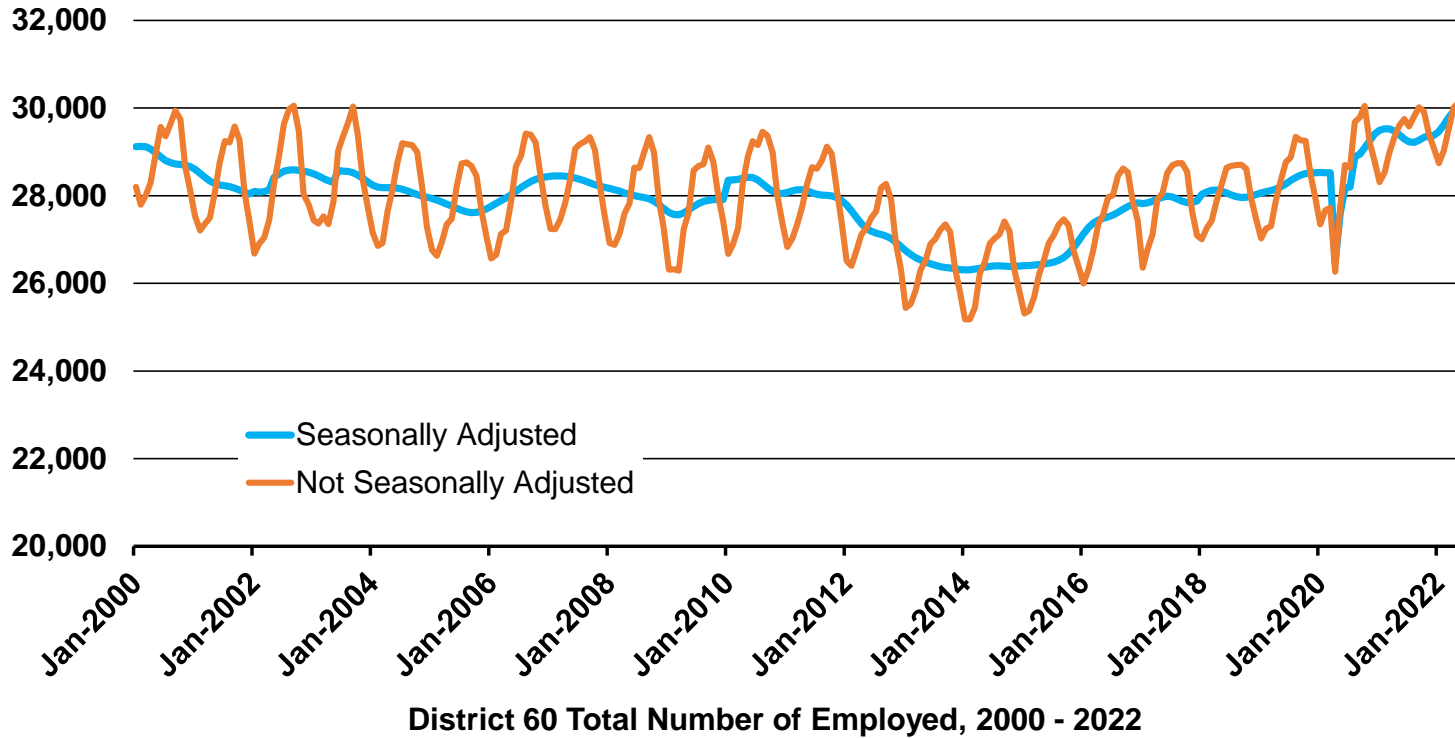
## More People in the Labor Force Than Prior to Pandemic



Source: Oregon Employment Department



## More People Employed Than Prior to Pandemic

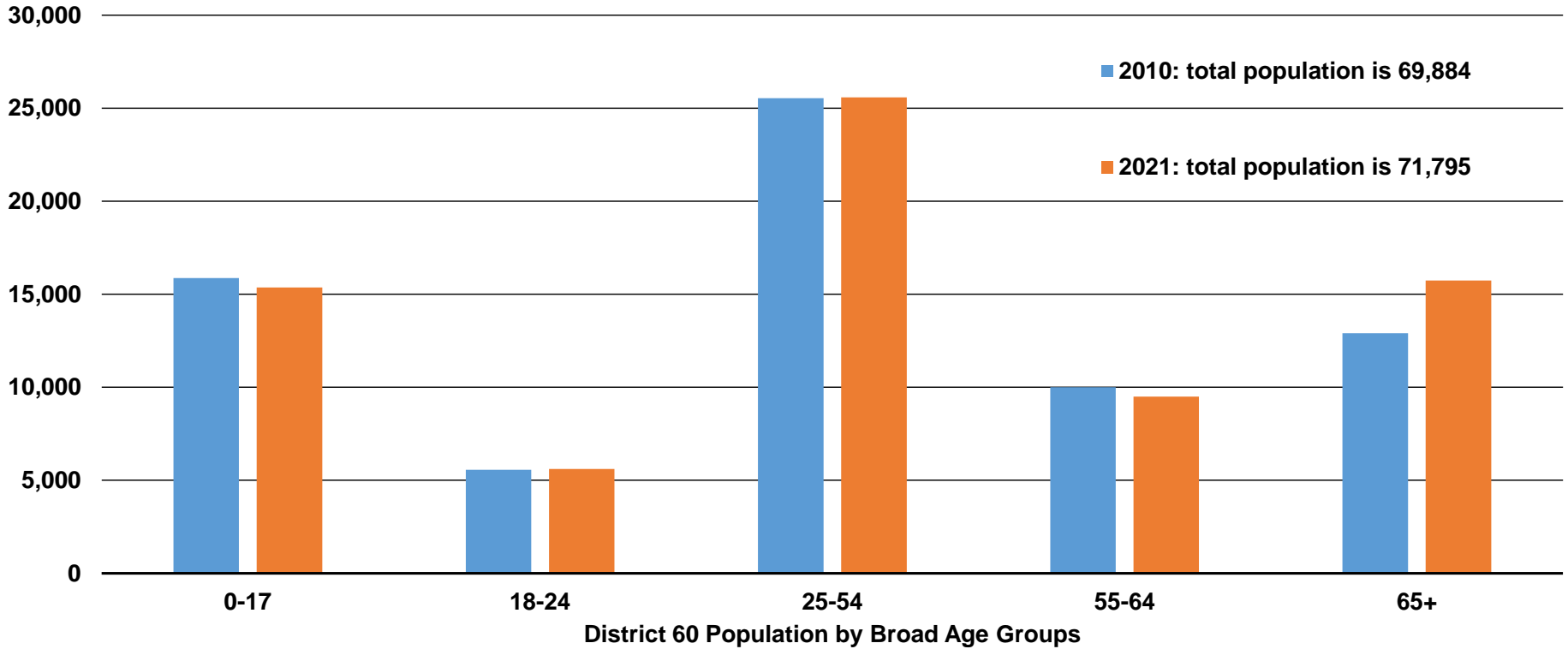


Source: Oregon Employment Department





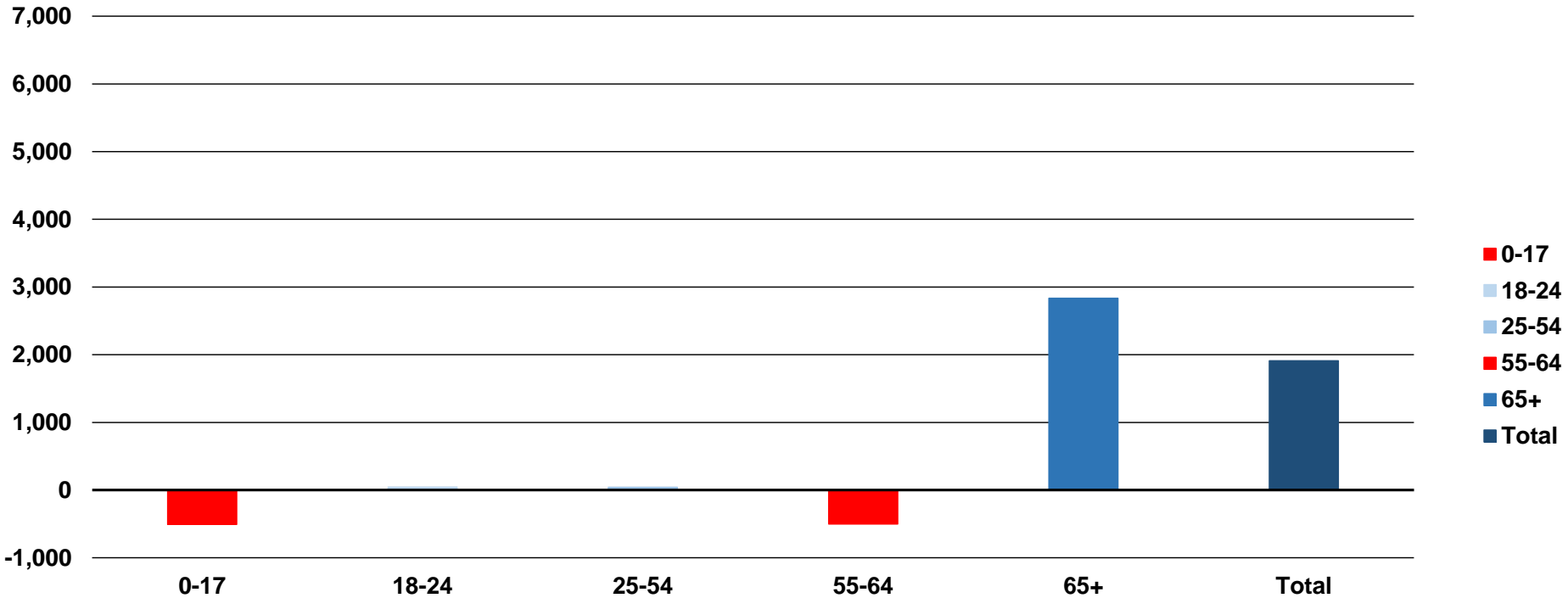
## Population Grew by Roughly 1,910 Residents from 2010 to 2021



Source: Oregon Employment Department and  
Portland State University Population Research Center



## Retirement Age Group Grew by Roughly 2,830 from 2010 to 2021



District 60 Population Change by Broad Age Groups

Source: Oregon Employment Department and  
Portland State University Population Research Center



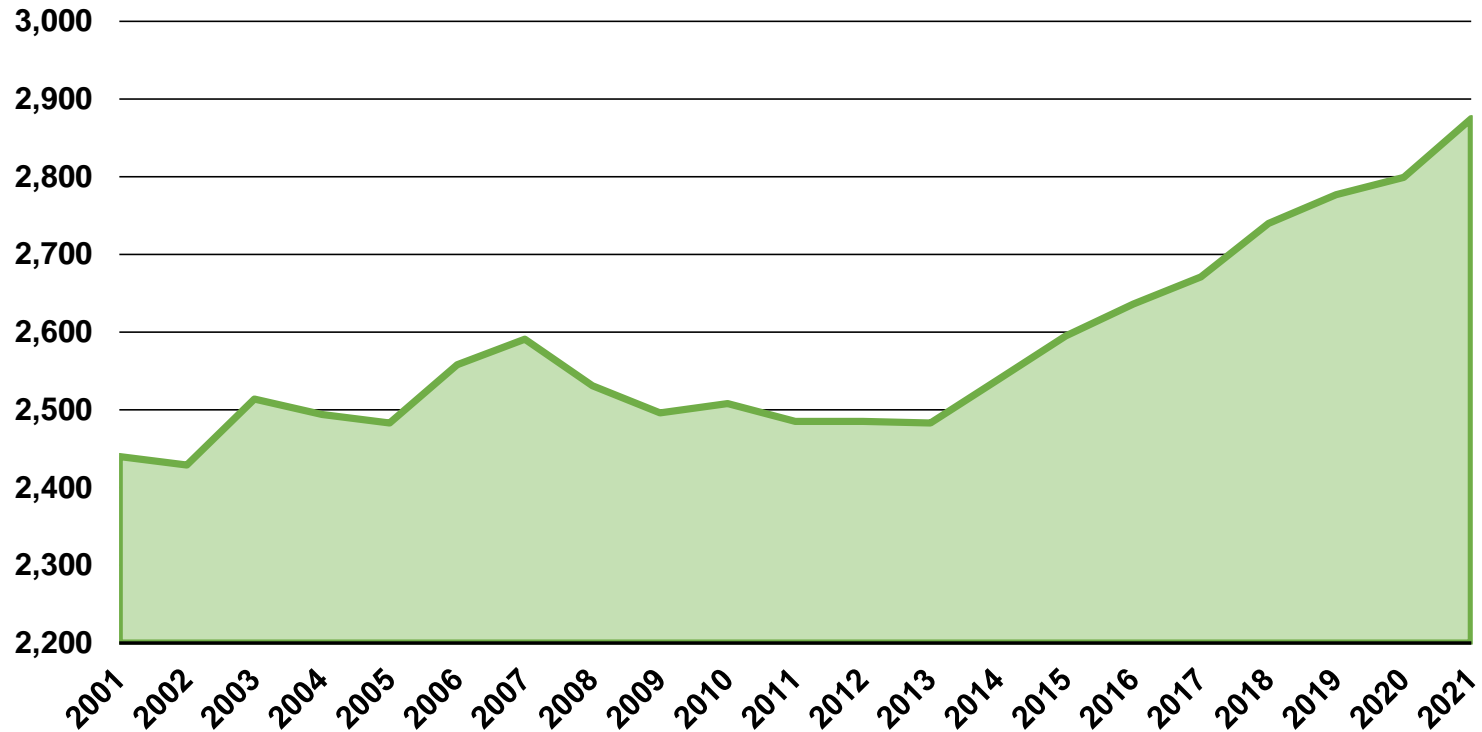
## Share of Population by Age Group in 2021

	0-17	18-24	25-54	55-64	65+	Potential Workforce	
						Entering or Established	School Age or Leaving
<b>District 60</b>	<b>21%</b>	<b>8%</b>	<b>36%</b>	<b>13%</b>	<b>22%</b>	<b>43%</b>	<b>57%</b>
Baker County	20%	6%	32%	15%	28%	38%	62%
Grant County	18%	6%	34%	16%	26%	40%	60%
Harney County	21%	7%	36%	15%	22%	43%	57%
Lake County	19%	6%	35%	15%	24%	42%	58%
Malheur County	24%	10%	38%	11%	17%	48%	52%

*Source: Oregon Employment Department and Portland State University, Population Research Center*



## Potential Employers Grew by 100 Since 2019, Nearly 400 Since 2013

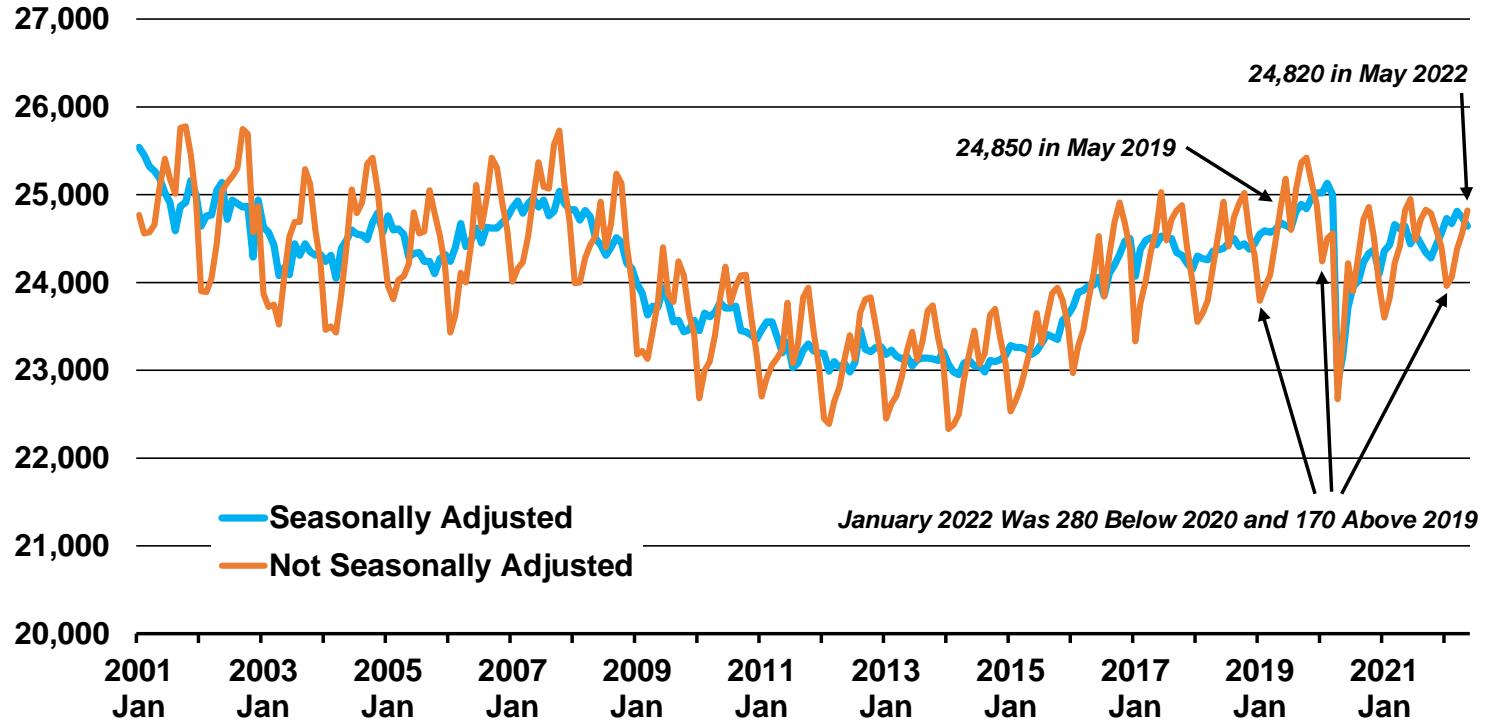


District 60 Total Number of Business Units With UI#, 2001 - 2021

Source: Oregon Employment Department



## Nonfarm Employment Running at Pre-Pandemic Levels



District 60 Total Nonfarm Employment, 2001 - 2022

Source: Oregon Employment Department



## Total Nonfarm Employment

	<b>May 2022</b>	<b>Share of District</b>	<b>May 2019 to May 2022</b>	<b>Oct 2019 to Oct 2021</b>	<b>Oct 2019 to May 2022</b>
<b>District 60</b>	<b>24,820</b>	<b>100.0%</b>	<b>-30</b>	<b>-630</b>	<b>-600</b>
Baker County	5,750	23.2%	90	-70	60
Grant County	2,320	9.3%	-100	-120	-210
Harney County	2,450	9.9%	10	-10	-10
Lake County	2,310	9.3%	20	-60	-110
Malheur County	11,990	48.3%	-50	-370	-330

Source: Oregon Employment Department

**Grant** = Loss is Largely Federal and Local Government

**Lake** = Loss is Largely Federal and Local Government

**Malheur** = -120 Manufacturing      -40 Transportation and Warehousing  
 -130 Information                      -60 Other Services  
 -130 Wholesale                        -130 Local Government  
  
 +300 Retail Trade



## Malheur County Labor Market Size (All Jobs) - 2019

	Count	Share
Employed in Malheur County	13,633	100.0%
Living in Malheur County	10,748	78.8%
Net Job Inflow (+) or Outflow (-)	2,885	-
<b>Employed in Malheur County</b>	<b>13,633</b>	<b>100.0%</b>
Employed and Living in Malheur County	6,809	49.9%
Employed in Malheur County but Living Outside	6,824	50.1%
<b>Living in Malheur County</b>	<b>10,748</b>	<b>100.0%</b>
Living and Employed in Malheur County	6,809	63.4%
Living in Malheur County but Employed Outside	3,939	36.6%

Source: Oregon Employment Department and U.S. Census Bureau, On-The-Map



## Malheur County Inflow/Outflow Job Characteristics - 2019

	Outflow		Inflow	
	Count	Share	Count	Share
External Jobs Filled by Residents	3,939	100%		
Internal Jobs Filled by Outside Workers			6,824	100%
Workers Aged 29 or younger	1,076	27%	1,466	21%
Workers Aged 30 to 54	1,903	48%	3,578	52%
Workers Aged 55 or older	960	24%	1,780	26%
Workers Earning \$1,250 per month or less	1,048	27%	1,488	22%
Workers Earning \$1,251 to \$3,333 per month	1,652	42%	2,417	35%
Workers Earning More than \$3,333 per month	1,239	31%	2,919	43%
Workers in the "Goods Producing" Industry Class	1,203	31%	1,144	17%
Workers in the "Trade, Transportation, and Utilities" Industry Class	841	21%	1,728	25%
Workers in the "All Other Services" Industry Class	1,895	48%	3,952	58%

*Source: Oregon Employment Department and U.S. Census Bureau, On-The-Map*





For More Information

**Chris Rich, Eastern Oregon Regional Economist**

[Christopher.M.Rich@Oregon.gov](mailto:Christopher.M.Rich@Oregon.gov)

(541) 519-0315

[www.Qualityinfo.org](http://www.Qualityinfo.org)

Get the latest workforce and economic research delivered to your inbox!

Sign up at <https://www.qualityinfo.org/p-sofrm/>

**Join the conversation:**

[OregonEmployment.Blogspot.com](http://OregonEmployment.Blogspot.com)

Twitter: [@OED Research](https://twitter.com/OED_Research)

