



# Eastern Oregon Labor Force and Economic Activity

By Chris Rich - Eastern Oregon Regional Economist

July 26, 2022



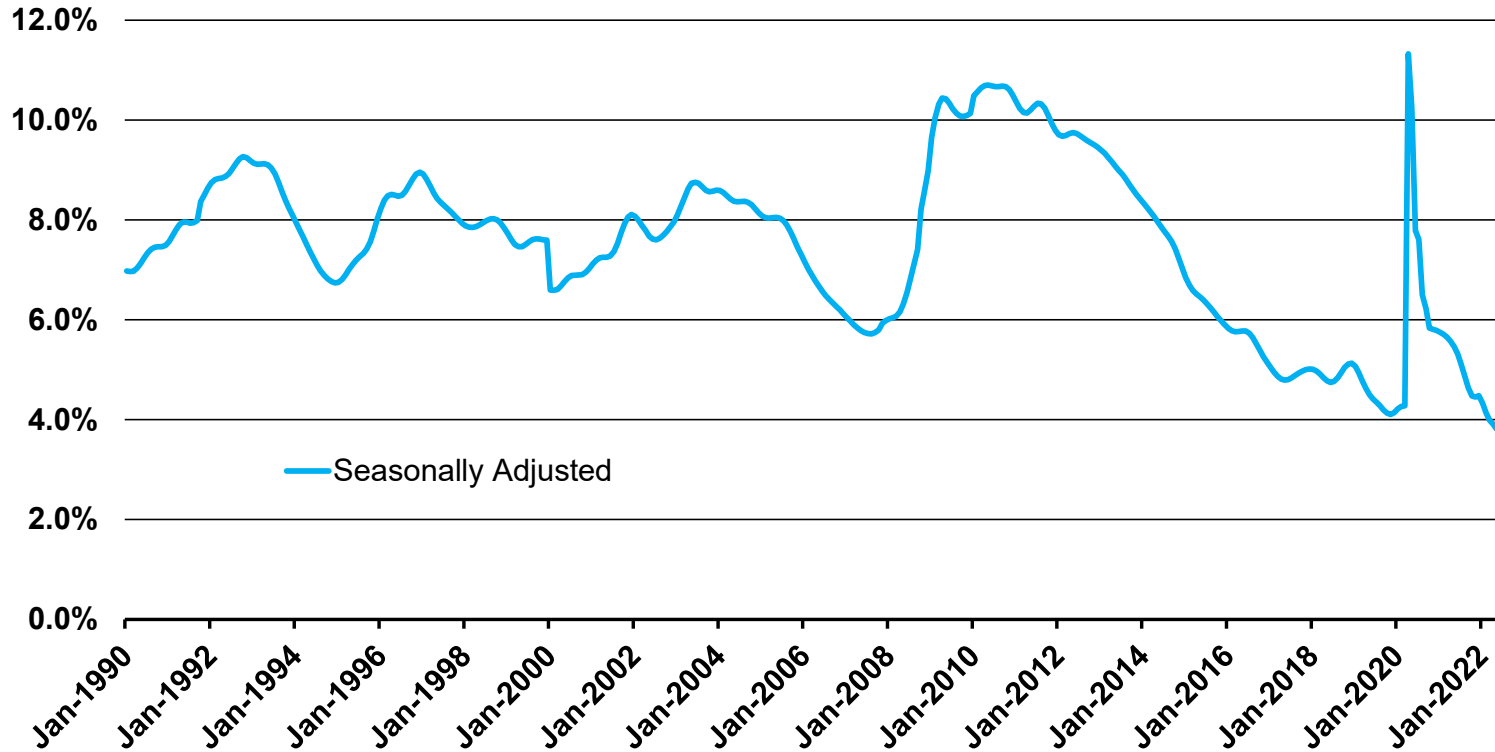
## Population in 2021

	<u>Count</u>	<u>Share</u>
<b>Eastern Oregon</b>	<b>190,504</b>	<b>100.0%</b>
Baker County	16,860	8.9%
Grant County	7,226	3.8%
Harney County	7,537	4.0%
Malheur County	31,995	16.8%
Morrow County	12,635	6.6%
Umatilla County	80,523	42.3%
Union County	26,295	13.8%
Wallowa County	7,433	3.9%

*Source: Oregon Employment Department and Portland State University, Population Research Center*



## Eastern Oregon Unemployment Rate at Lowest Level on Record

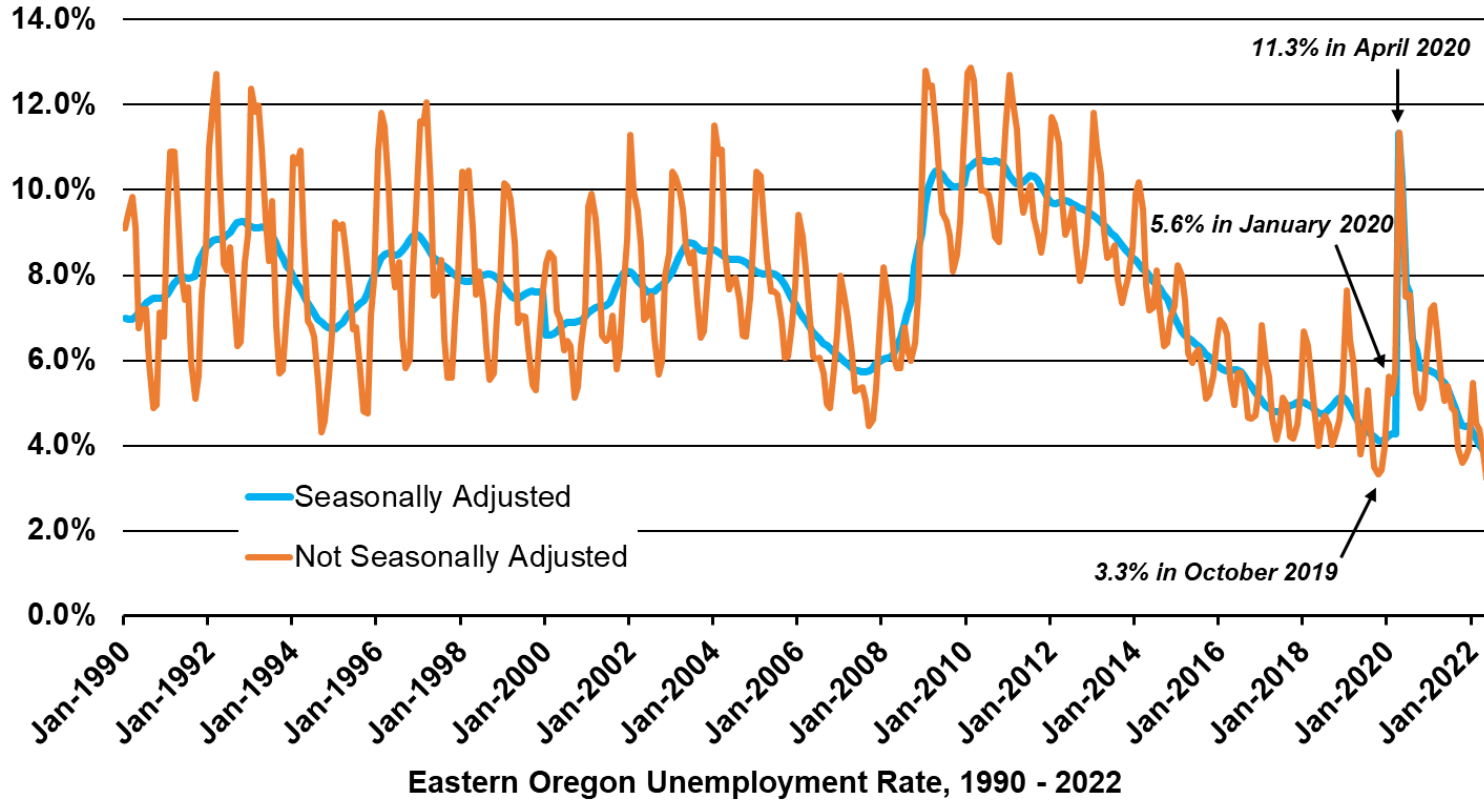


Seasonally Adjusted Unemployment Rate, 1990 - 2022

Source: Oregon Employment Department



## Historically the Region Has a High Degree of Seasonal Fluctuation



Source: Oregon Employment Department



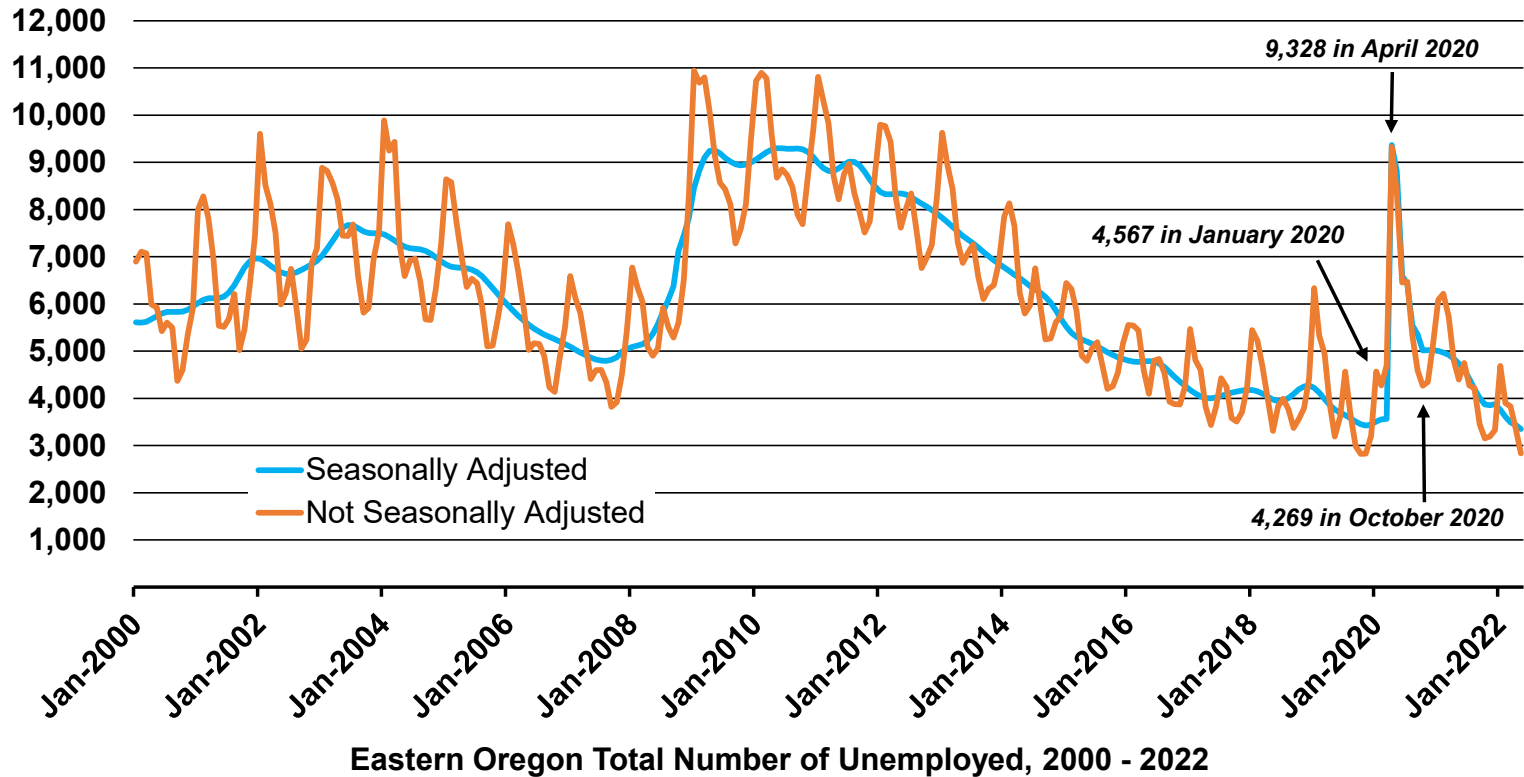
## Unemployment Rate - Not Seasonally Adjusted

	Historical			
	May 2022	Low	High	Median
<b>Eastern Oregon</b>	<b>3.2</b>	<b>3.2</b>	<b>14.5</b>	<b>8.2</b>
Baker County	3.2	3.2	14.7	7.7
Grant County	4.8	3.7	22.6	9.5
Harney County	3.2	3.2	20.0	8.6
Malheur County	3.0	2.7	13.5	7.3
Morrow County	2.8	2.8	17.1	7.2
Umatilla County	3.2	3.2	14.2	7.0
Union County	3.3	3.3	16.2	6.6
Wallowa County	3.7	3.5	17.8	8.3

*Source: Oregon Employment Department*



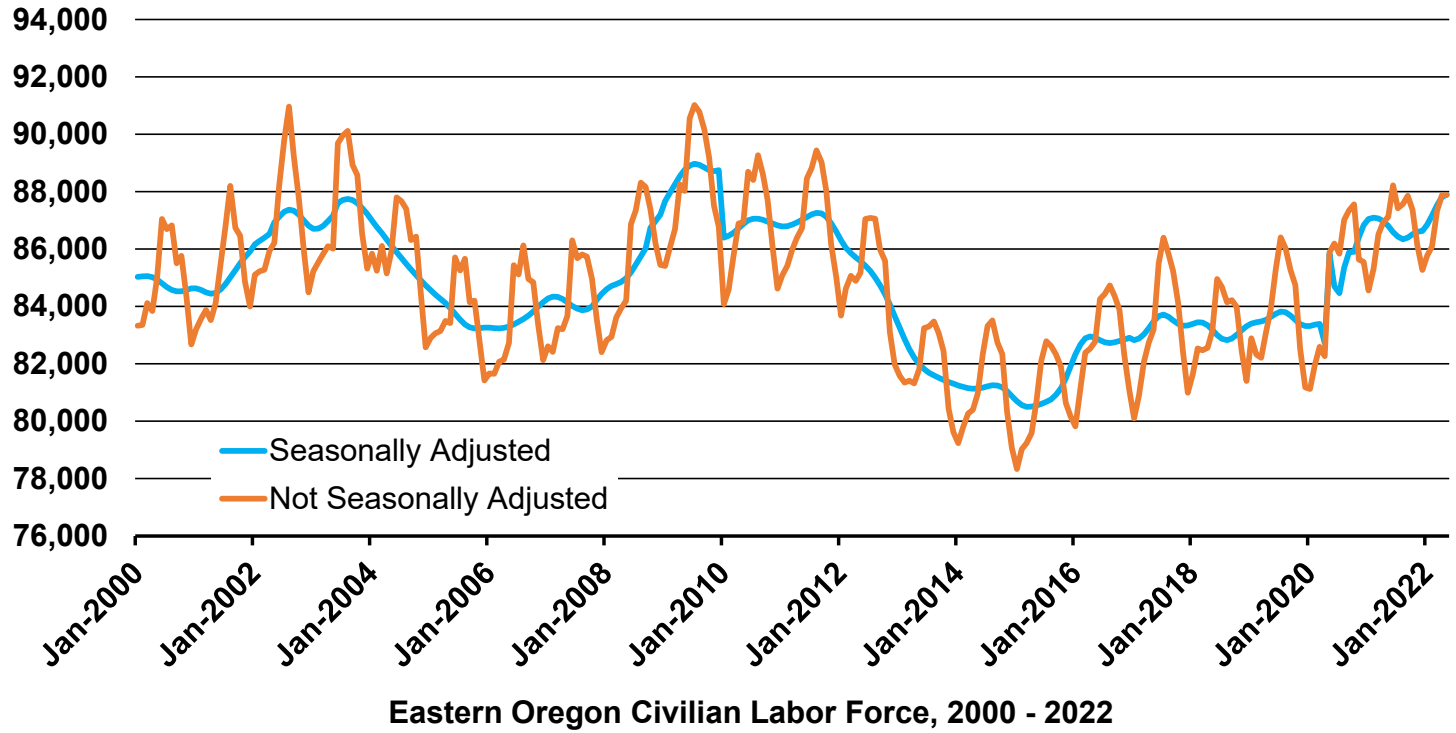
## Historically Large Available Labor Pool Diminishing Over Time



Source: Oregon Employment Department



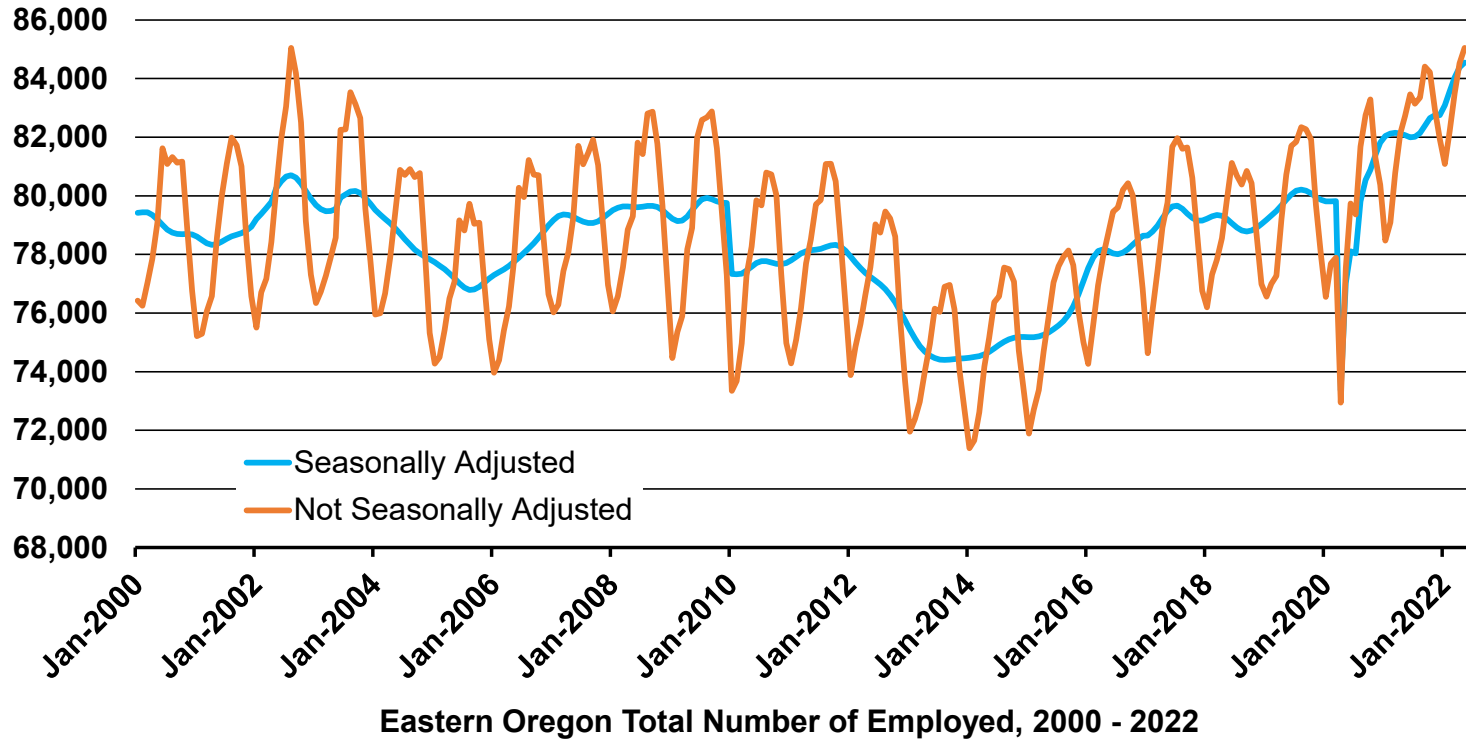
## More People in the Labor Force Than Prior to Pandemic



Source: Oregon Employment Department



## More People Employed Than Prior to Pandemic

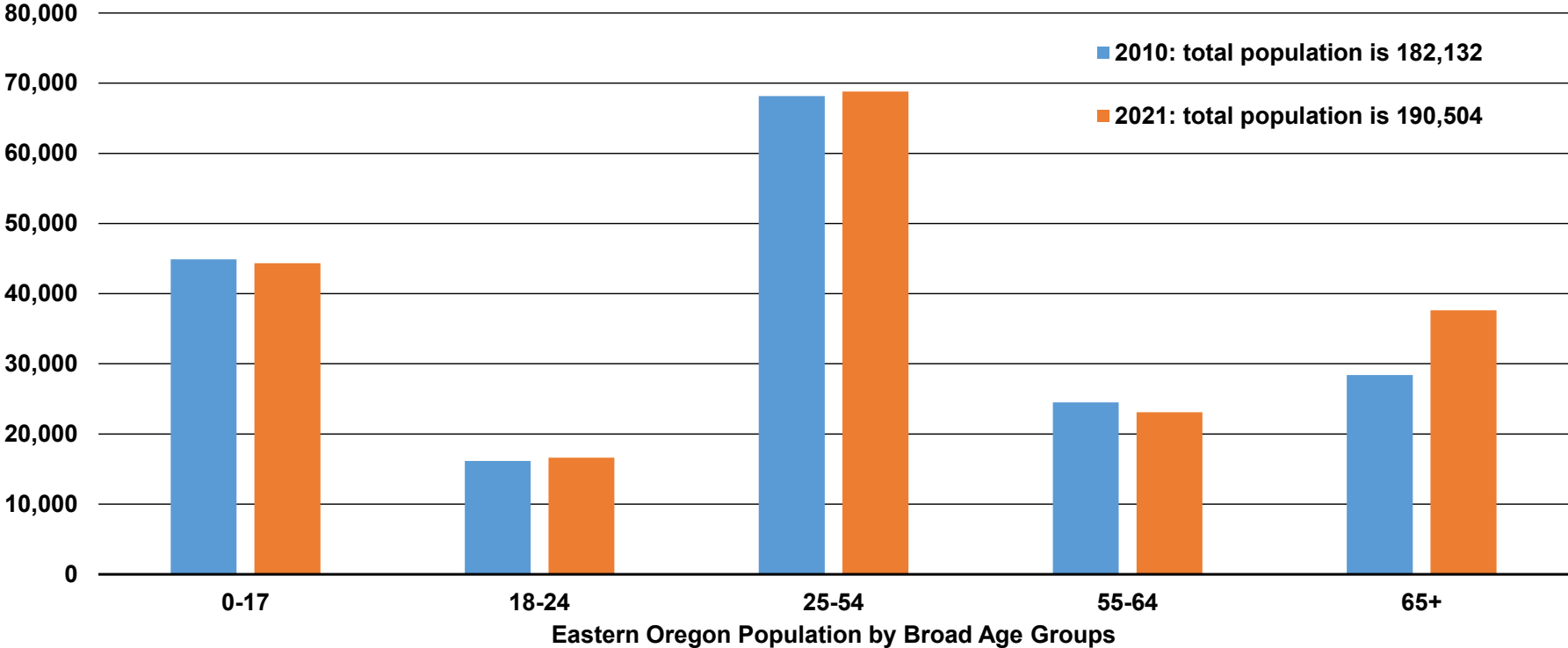


Source: Oregon Employment Department





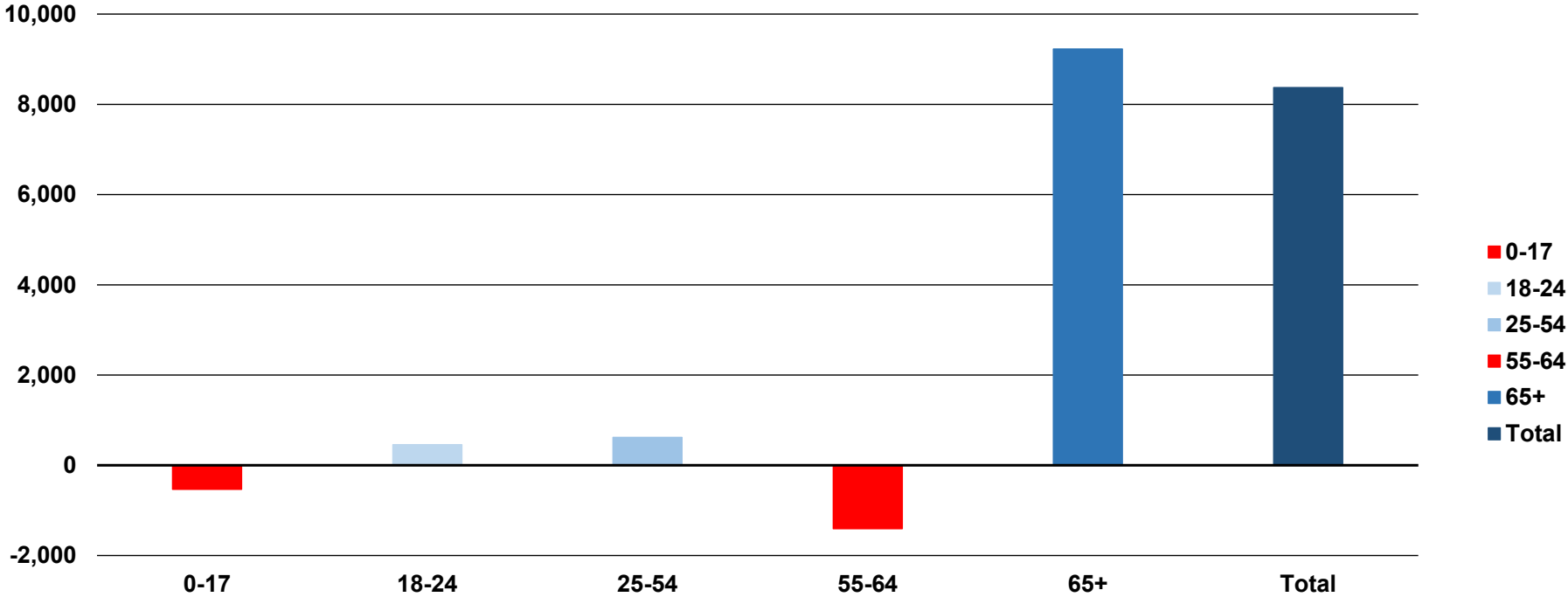
# Population Grew by Roughly 8,370 Residents from 2010 to 2021



Source: Oregon Employment Department and Portland State University Population Research Center



### Retirement Age Group Grew by Roughly 9,230 from 2010 to 2021



Eastern Oregon Population Change by Broad Age Groups

Source: Oregon Employment Department and Portland State University Population Research Center



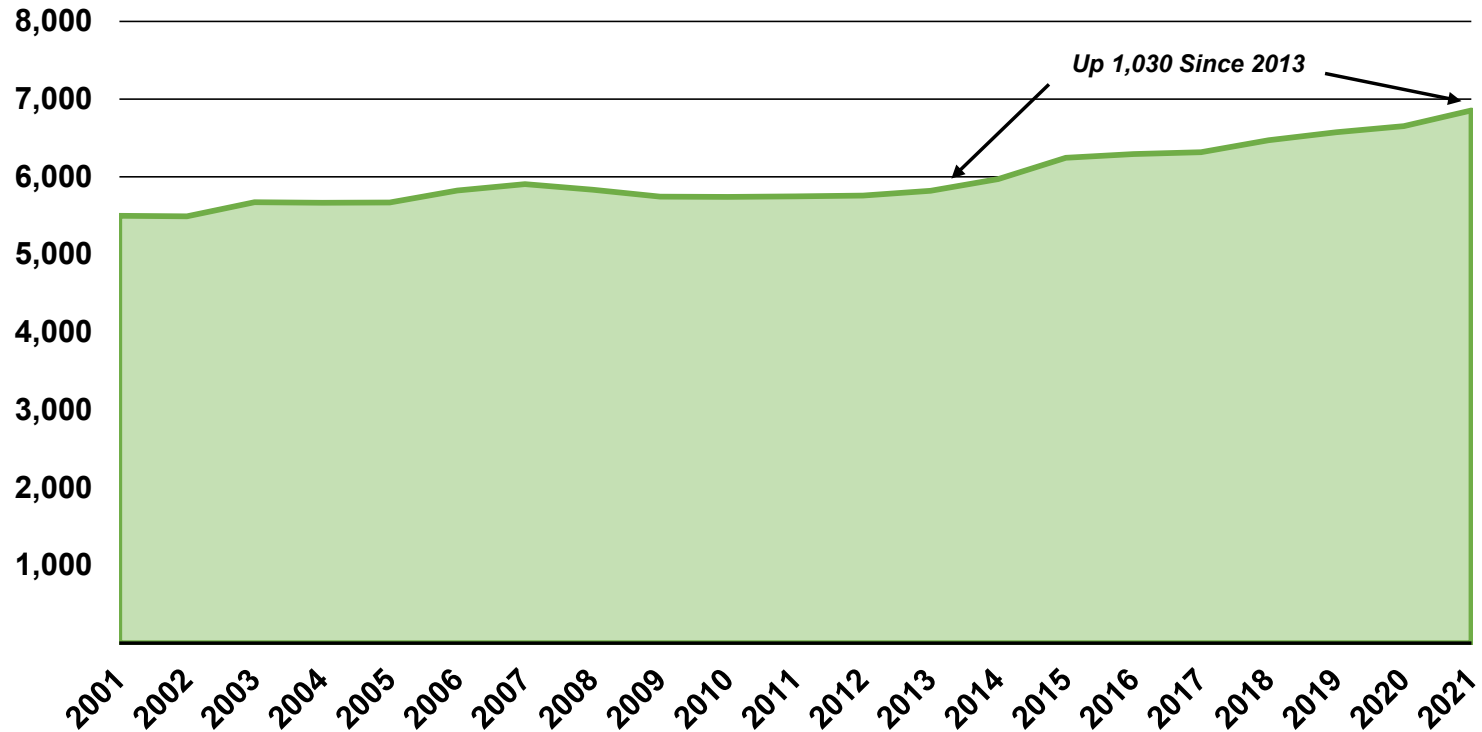
## Share of Population by Age Group in 2021

	0-17	18-24	25-54	55-64	65+	Potential Workforce	
						Entering or Established	School Age or Leaving
<b>Eastern Oregon</b>	<b>23%</b>	<b>9%</b>	<b>36%</b>	<b>12%</b>	<b>20%</b>	<b>45%</b>	<b>55%</b>
Baker County	20%	6%	32%	15%	28%	38%	62%
Grant County	18%	6%	34%	16%	26%	40%	60%
Harney County	21%	7%	36%	15%	22%	43%	57%
Malheur County	24%	10%	38%	11%	17%	48%	52%
Morrow County	27%	9%	34%	12%	17%	43%	57%
Umatilla County	25%	9%	38%	11%	17%	47%	53%
Union County	22%	11%	33%	12%	22%	44%	56%
Wallowa County	19%	5%	31%	15%	31%	35%	65%

*Source: Oregon Employment Department and Portland State University, Population Research Center*



## Potential Employers Grew by 280 Since 2019 and 540 Since 2017

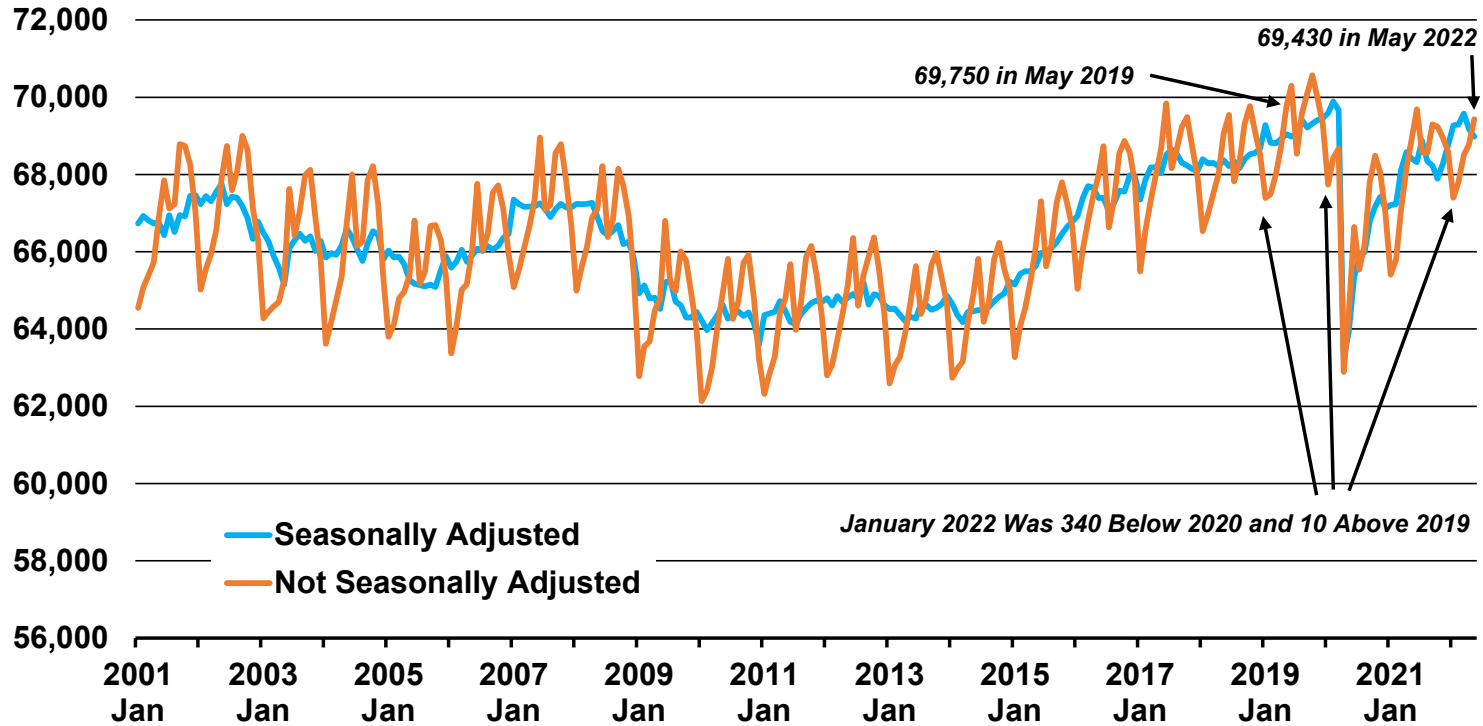


Eastern Oregon Total Number of Business Units With UI#, 2001 - 2021

Source: Oregon Employment Department



## Nonfarm Employment Running at Pre-Pandemic Levels



Eastern Oregon Total Nonfarm Employment, 2001 - 2022

Source: Oregon Employment Department



## Total Nonfarm Employment

	May 2022	Share of Region	May 2019 to May 2022	Oct 2019 to Oct 2021	Oct 2019 to May 2022
<b>Eastern Oregon</b>	<b>69,430</b>	<b>100.0%</b>	<b>-320</b>	<b>-1,330</b>	<b>-1,140</b>
Baker County	5,750	8.3%	90	-70	60
Grant County	2,320	3.3%	-100	-120	-210
Harney County	2,450	3.5%	10	-10	-10
Malheur County	11,990	17.3%	-50	-370	-330
Morrow County	5,240	7.5%	210	120	210
Umatilla County	28,420	40.9%	-260	-500	-600
Union County	10,520	15.2%	-310	-430	-350
Wallowa County	2,740	3.9%	90	50	90

Source: Oregon Employment Department

**Morrow =** There is limited sharable information available for the increase in Morrow County due to industry level confidentiality

**Union =** -60 Transportation and Warehousing  
 -30 Wholesale trade  
 -230 Education and Health Services  
 -70 Local Government

**Grant =** Loss is Largely Federal and Local Government

**Malheur =** -120 Manufacturing -40 Transportation and Warehousing  
 -130 Information -60 Other Services  
 -130 Wholesale -130 Local Government  
 +300 Retail Trade

**Umatilla =** Down roughly 500 in manufacturing  
 Down 170 in local government, mainly in education  
 Up roughly 250 in retail trade



## Eastern Oregon Labor Market Size (All Jobs) - 2019

	<b>Baker</b>	<b>Grant</b>	<b>Harney</b>	<b>Malheur</b>	<b>Morrow</b>	<b>Umatilla</b>	<b>Union</b>	<b>Wallowa</b>
<b>Net Job Inflow (+) or Outflow (-)</b>	<b>-761</b>	<b>-457</b>	<b>-243</b>	<b>2,885</b>	<b>649</b>	<b>-1,746</b>	<b>-707</b>	<b>-258</b>
<b>Employed in County</b>	<b>5,621</b>	<b>2,294</b>	<b>2,446</b>	<b>13,633</b>	<b>5,454</b>	<b>30,689</b>	<b>10,454</b>	<b>2,667</b>
Employed and Living in County	4,116	1,633	1,837	6,809	2,197	21,683	7,826	2,025
Employed in, but Living Outside	1,505	661	609	6,824	3,257	9,006	2,628	642
<b>Living in County</b>	<b>6,382</b>	<b>2,751</b>	<b>2,689</b>	<b>10,748</b>	<b>4,805</b>	<b>32,435</b>	<b>11,161</b>	<b>2,925</b>
Living and Employed in County	4,116	1,633	1,837	6,809	2,197	21,683	7,826	2,025
Living in, but Employed Outside	2,266	1,118	852	3,939	2,608	10,752	3,335	900

Source: Oregon Employment Department and U.S. Census Bureau, On-The-Map



## Malheur County Inflow/Outflow Job Characteristics - 2019

	Outflow		Inflow	
	Count	Share	Count	Share
External Jobs Filled by Residents	3,939	100%		
Internal Jobs Filled by Outside Workers			6,824	100%
Workers Aged 29 or younger	1,076	27%	1,466	21%
Workers Aged 30 to 54	1,903	48%	3,578	52%
Workers Aged 55 or older	960	24%	1,780	26%
Workers Earning \$1,250 per month or less	1,048	27%	1,488	22%
Workers Earning \$1,251 to \$3,333 per month	1,652	42%	2,417	35%
Workers Earning More than \$3,333 per month	1,239	31%	2,919	43%
Workers in the "Goods Producing" Industry Class	1,203	31%	1,144	17%
Workers in the "Trade, Transportation, and Utilities" Industry Class	841	21%	1,728	25%
Workers in the "All Other Services" Industry Class	1,895	48%	3,952	58%

*Source: Oregon Employment Department and U.S. Census Bureau, On-The-Map*





## Morrow County Inflow/Outflow Job Characteristics - 2019

	Outflow		Inflow	
	Count	Share	Count	Share
External Jobs Filled by Residents	2,608	100%		
Internal Jobs Filled by Outside Workers			3,257	100%
Workers Aged 29 or younger	599	23%	687	21%
Workers Aged 30 to 54	1,366	52%	1,767	54%
Workers Aged 55 or older	643	25%	803	25%
Workers Earning \$1,250 per month or less	568	22%	455	14%
Workers Earning \$1,251 to \$3,333 per month	949	36%	859	26%
Workers Earning More than \$3,333 per month	1,091	42%	1,943	60%
Workers in the "Goods Producing" Industry Class	675	26%	1,789	55%
Workers in the "Trade, Transportation, and Utilities" Industry Class	647	25%	380	12%
Workers in the "All Other Services" Industry Class	1,286	49%	1,088	33%

*Source: Oregon Employment Department and U.S. Census Bureau, On-The-Map*



## Total Known Job Listings on 7/18/2022

	Baker	Grant	Harney	Malheur	Morrow	Umatilla	Union	Wallowa	Eastern Oregon
<b>Listed Anytime and Still Listed</b>									
Job Listings From the Internet	160	88	64	458	402	1,229	221	39	2,661
Employment Department Listings	77	55	49	181	313	773	155	23	1,626
<b>Listed Within Last 30 Days</b>									
Job Listings From the Internet	59	40	20	246	150	578	111	17	1,221
Employment Department Listings	21	22	12	79	105	353	78	7	677

*Source: Oregon Employment Department*

Note: 'Job Listings From the Internet' have been automatically extracted from various websites. The Employment Department cannot validate these openings. Some jobs may no longer be open, and a single opening may be posted on multiple sites.



The total number of job vacancies, as suggested on the 'Total Known Job Listings' slide, is somewhere between the number of job listings from the internet and the number of Employment Department listings. The level is likely closer to the number of Employment Department Listings for the following reasons.

The total number of job vacancies is difficult to quantify. Employers aren't required to report open positions to the Employment Department or that an open position has been filled. Employers also list open positions in various ways: internet job boards, company websites, employment service providers, temp agencies, storefronts, newspapers, billboards, word of mouth, and so on.

When examining listings found in the all job listings from the internet category, we find a significant number of repeat listings as well as no longer valid listings. This is often the case with health care positions, or higher wage and higher education positions, but can also be the case for all categories. In order to eliminate these listings we have to examine each individual job listing; a laborious task that can yield uncertain results.



## Total Known Job Listings on 7/18/2022

	Baker	Grant	Harney	Malheur	Morrow	Umatilla	Union	Wallowa	Eastern Oregon
<b>Listed Anytime and Still Listed</b>									
Job Listings From the Internet	160	88	64	458	402	1,229	221	39	2,661
Employment Department Listings	77	55	49	181	313	773	155	23	1,626
<b>Listed Within Last 30 Days</b>									
Job Listings From the Internet	59	40	20	246	150	578	111	17	1,221
Employment Department Listings	21	22	12	79	105	353	78	7	677

*Source: Oregon Employment Department*

Note: 'Job Listings From the Internet' have been automatically extracted from various websites. The Employment Department cannot validate these openings. Some jobs may no longer be open, and a single opening may be posted on multiple sites.



## Number of Continued Claimants on Unemployment Insurance

	May - 2019	*May - 2020	May - 2021	May - 2022
<b>Eastern Oregon</b>	<b>888</b>	<b>5,364</b>	<b>1,539</b>	<b>655</b>
Baker	80	456	119	50
Grant	57	222	82	53
Harney	44	156	60	26
Malheur	101	506	191	105
Morrow	48	197	119	36
Umatilla	369	2,505	659	264
Union	130	1,102	232	84
Wallowa	59	220	77	37

*Source: Oregon Employment Department*

*Note: \*Two months into the COVID-19 Pandemic*



## Number of Continued Claimants by Age Group - May 2022

	<b>20 to 24</b>	<b>25 to 34</b>	<b>35 to 44</b>	<b>45 to 54</b>	<b>55 to 64</b>	<b>65+</b>	<b>Non Confidential Total</b>	<b>Actual Total</b>
<b>Eastern Oregon</b>	<b>15</b>	<b>133</b>	<b>120</b>	<b>135</b>	<b>132</b>	<b>48</b>	<b>583</b>	<b>655</b>
Baker	-c-	10	13	8	10	5	46	50
Grant	-c-	15	6	11	10	6	48	53
Harney	-c-	7	7	4	-c-	4	22	26
Malheur	-c-	10	5	27	31	3	76	105
Morrow	-c-	7	8	7	10	-c-	32	36
Umatilla	11	63	53	56	45	16	244	264
Union	4	18	18	16	18	7	81	84
Wallowa	-c-	3	10	6	8	7	34	37

*Source: Oregon Employment Department*

Note: 16 to 19 confidential in all counties, Unknown eliminated to provide secondary confidentiality

Note: \*Two months into the COVID-19 Pandemic



For More Information

**Chris Rich, Eastern Oregon Regional Economist**

[Christopher.M.Rich@Oregon.gov](mailto:Christopher.M.Rich@Oregon.gov)

(541) 519-0315

[www.Qualityinfo.org](http://www.Qualityinfo.org)

Get the latest workforce and economic research delivered to your inbox!

Sign up at <https://www.qualityinfo.org/p-sofrm/>

**Join the conversation:**

[OregonEmployment.Blogspot.com](http://OregonEmployment.Blogspot.com)

Twitter: [@OED Research](https://twitter.com/OED_Research)

