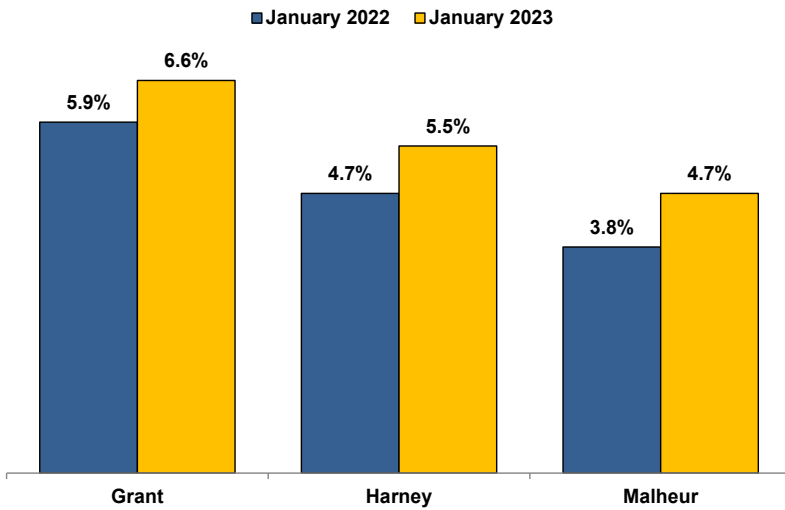


Unemployment Rates (Seasonally Adjusted)



Unemployment Rate News

Malheur County's seasonally adjusted unemployment rate for January 2023 was 4.7%, while Harney County came in at 5.5% and Grant County at 6.6%. Malheur County's rate was below Oregon's statewide rate of 4.8% while all three counties' rates were above the national rate of 3.4%.

Malheur County's rate ranked in a three-way tie for 15th lowest among Oregon's 36 counties for the month while Harney County's ranked 25th and Grant County's sat at 36th.

All three counties' rates were above the previous January's rates.

Since comparable statistics began in 1990, Grant County's only lower January rates came in 2022 and 2020 while Harney County had lower January rates only in 2022, 2021, and 2020. Malheur County had lower January rates in 2022, 2020, 2018, and 2017.

Nonfarm Employment Change

January 2022 to January 2023

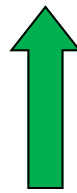
Grant County added an estimated 80 jobs over the year. The private sector increased by 30 jobs with gains in mining and logging, construction, and education and health services. No private industries lost jobs. The public sector added 50 jobs with gains in local and state government while federal government was unchanged.

Harney County lost an estimated 60 jobs over the year. The private sector dropped 80 jobs led by losses in professional and business services and leisure and hospitality. Gains were confined to retail trade. The public sector added 20 jobs with a gain in local government while federal and state government were unchanged.

Malheur County employment decreased by an estimated 70 jobs over the year. The private sector lost 80 jobs led by losses in wholesale trade and mining, logging, and construction. Gains were confined to financial activities, professional and business services, and other services. The public sector added 10 jobs with a gain in state government overcoming losses in federal and local government.

Notable Industry Gains and Losses

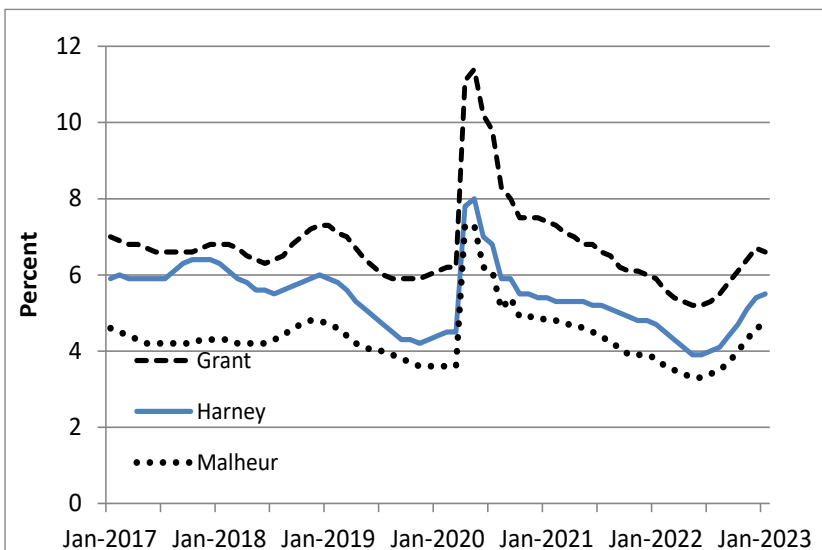
Over-the-Year Employment Change from January 2022



Grant	Harney	Malheur
Local Government (+30)	Local Government (+20)	State Government (+30)
State Government (+20)	Retail Trade (+10)	Financial Activities (+20)
Mining/Logging (+10)		Professional/Business Services (+10)
Construction (+10)		Other Services (+10)
Private Education/Health Services (+10)		

	Professional/Business Services (-50)	Wholesale Trade (-60)
	Leisure/Hospitality (-30)	Mining/Logging/Construction (-20)
	Goods-producing (-10)	Manufacturing (-10)
		Retail Trade (-10)

Unemployment rate climbing from historical lows (since 1990)



Want to learn more about the Oregon economy?

Follow us on Twitter at: [Twitter.com/OED_Research](https://twitter.com/OED_Research)

Visit our web site at: QualityInfo.org

Visit our subscription service at: qualityinfo.org/subscribe

For more economic or labor market data about Grant, Harney or Malheur counties, contact:

Tony Wendel, Workforce Analyst

Cell: 541-667-7027

E-mail: Tony.A.Wendel@employ.oregon.gov

Chris Rich, Regional Economist

Cell: 541-519-0315

E-mail: Christopher.M.Rich@employ.oregon.gov

Want to be added to the monthly distribution list?

E-mail me at: Tony.A.Wendel@employ.oregon.gov